

# DELIVERY SYSTEM INTERNAL ACCESS

## ASI TECHNICAL GUIDELINE TO OPEN COVERS/COVER PLATES

65-0229 | Rev B1 | 07/17/23 | Page 1 of 6

### PURPOSE

This technical guideline demonstrates how to open the cover of the delivery unit, providing access to the control blocks, water relays, and instruments. Maintenance and repairs should be performed by a qualified technician.

### TOOLS REQUIRED FOR OPENING COVER

- Phillips screwdriver for Self-Contained Series, Designer Series
- Flat head screwdriver for Classic Series

### TOOLS REQUIRED TO REMOVE COVER PLATE

- 5/16" nut driver

#### **IMPORTANT!**

**Before commencing on the following instructions, please read and follow all applicable warnings/cautions listed at the end of this technical guideline.**

### INSTRUCTIONS FOR OPENING THE COVER ON SELF-CONTAINED SERIES CARTS

- For instructions for the Designer Series, please skip ahead to Step 4.
- For instructions for the Classic Series, please skip ahead to Step 7.

### INSTRUCTIONS FOR CREATING MORE ACCESS: REMOVING THE COVER PLATE

- For instructions for the Classic and Designer Series, go to Step 10.

- 1 Turn OFF main power and air supply to unit.
- 2 Lift up and remove the worktop. The worktop is secured using a high-grade plastic Velcro. Due to its weight and the holding power of the Velcro, it will require firm lifting in order to remove.

# DELIVERY SYSTEM INTERNAL ACCESS

## ASI Technical Guideline to Open Covers/Cover Plates

65-0229 | Rev B1 | 07/17/23 | Page 2 of 6

- 3 To access the electrical and pneumatic components, locate and remove the top screws securing the rear electrical safety cover using a Phillips screwdriver. (Fig. 1, Fig. 2)



Fig. 1



Fig. 2

## INSTRUCTIONS FOR DESIGNER SERIES CARTS AND CLASSIC CARTS *(manufactured late 2016 and later)*

- 4 Turn OFF main power and air supply to unit.
- 5 Lift up and remove the worktop. To access the electrical and pneumatic components, locate and remove the top screws securing the rear electrical safety cover plate using a Phillips screwdriver. (Fig. 3)

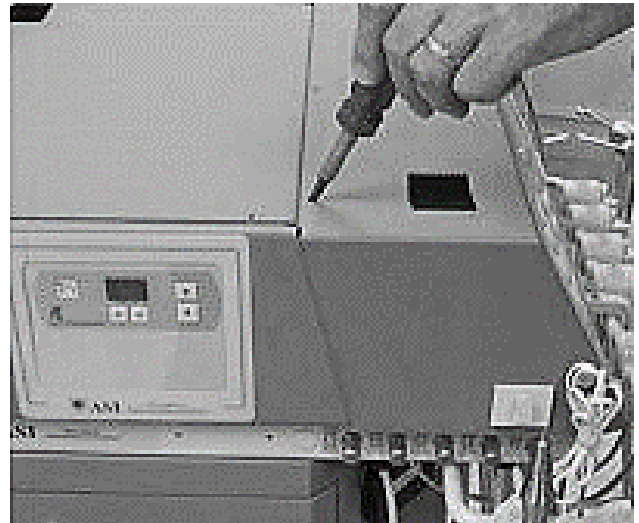


Fig. 3

- 6 Open cover by lifting forward from front of unit. Cover will hinge into place. Remove electrical safety cover plate. (Fig. 4)

**i** *Be sure all instruments are pointed clear of opening cover.*



Fig. 4

### INSTRUCTIONS FOR ARM CARTS AND CLASSIC SERIES CARTS *(manufactured until late 2016)*

- 7 Turn OFF main power and air supply to unit.
- 8 Remove the two thumb screws at base of cover plate using flat head screwdriver. (Fig. 5)



Fig. 5 – Arrow shows location of thumb screw

# DELIVERY SYSTEM INTERNAL ACCESS

ASI Technical Guideline to Open Covers/Cover Plates

65-0229 | Rev B1 | 07/17/23 | Page 4 of 6

- 9 Open cover by lifting up from rear of unit. Cover will hinge into place. (Fig. 6)

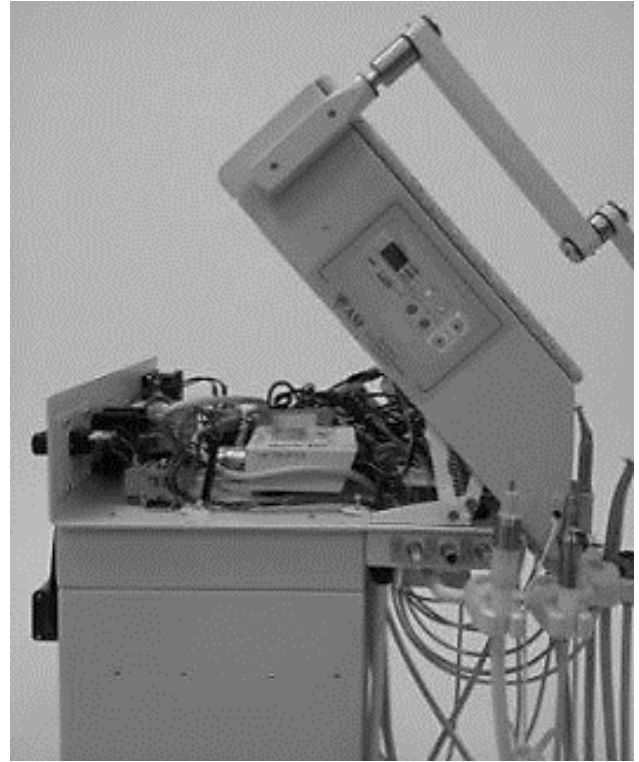


Fig. 6

## INSTRUCTIONS FOR CREATING MORE ACCESS

Removing the cover plate on Classic and Designer Series Carts

- 10 Turn OFF main power and air supply to unit.
- 11 Open cover of unit. Reference previous Steps 7 through 9 for Classic Series and Steps 4 through 6 for Designer Series.

- 12 Untighten the four (4) nuts holding the hinges to the baseplate using 5/16" nut driver/socket. Move cover forward to larger key holes and lift away from baseplate. Carefully pull cover away from baseplate. (Fig. 7, Fig. 8)

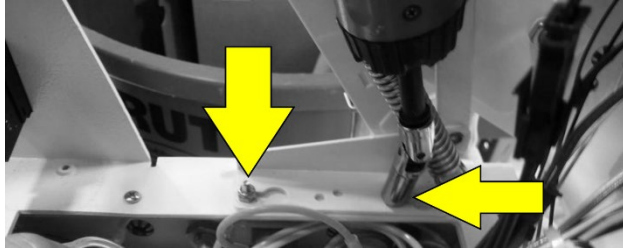


Fig. 7 – Arrows indicate location of nuts

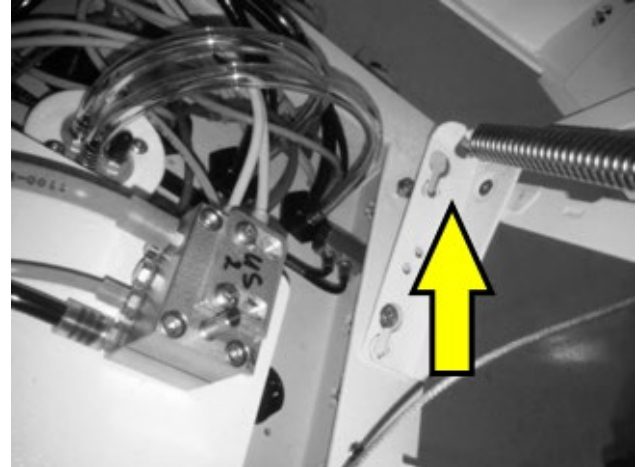


Fig. 8 – Arrow indicates key hole clearing nut on baseplate

- 13 Set cover back on baseplate.

**i** *Depending on access needed, label and disconnect wire connections and ribbon cables from panels; remove cover.*

- 14 Reassemble the unit. If connections were undone, restore power to unit and test instruments for proper operation.

## WARNINGS/CAUTIONS

In addition to observing the normal precautions associated with standard dental practices and procedures, the following additional precautions should be strictly noted and observed during the set-up, operation, and maintenance of this system.



### **⚠ WARNING**

#### **QUALIFIED PERSONNEL ONLY**

The product should only be operated by qualified personnel only. The operator bears responsibility for the correct settings and proper use of the system. ASI Dental (ASI) cannot be held liable for any malfunction of this product, or performance failure and/or its designed or desired utility, nor can ASI be held liable for injuries to persons or animals, in any case when the device is misused or not operated, applied or maintained in strict accordance with user/owner instructions set out in the operation manual. In the event of any doubt or question, the user is to contact ASI for clarification or assistance.

Improperly maintained or operated systems or instruments may void the associated warranties.

### **⚠ AVERTISSEMENT**

#### **PERSONNEL QUALIFIÉ UNIQUEMENT**

Le produit ne doit être utilisé que par du personnel qualifié. L'exploitant est responsable des réglages corrects et de l'utilisation correcte du système. ASI Dental (ASI) ne peut être tenu responsable de tout dysfonctionnement de ce produit, ou d'une défaillance de performance et/ou de son utilité conçue ou souhaitée, et ASI ne peut être tenu responsable des blessures aux personnes ou aux animaux, en tout cas lorsque l'appareil est mal utilisé ou pas utilisé, appliqué ou entretenu en stricte conformité avec les instructions de l'utilisateur/propriétaire énoncées dans le manuel d'utilisation. En cas de doute ou de question, l'utilisateur doit contacter ASI pour obtenir des éclaircissements ou de l'aide.

Des systèmes ou instruments mal entretenus ou mal exploités peuvent annuler les garanties associées.

# DELIVERY SYSTEM INTERNAL ACCESS

## ASI Technical Guideline to Open Covers/Cover Plates

65-0229 | Rev B1 | 07/17/23 | Page 6 of 6



### WARNING

#### COMPRESSED AIR

The compressed air system that operates this unit is under pressure. Compressed air can propel dust or loose particles and can cause bodily injury or damage. Always turn the system off and bleed off air pressure before attaching or removing air lines or accessories or servicing this unit. All air lines should be periodically inspected and replaced if worn or damaged.

If an outside compressed air supply is used to power this unit, the air supply must be regulated to 80 psi or below. Excessive air pressure could cause certain components to rupture.

### AVERTISSEMENT

#### AIR COMPRIMÉ

Le système d'air comprimé qui fait fonctionner cet appareil est sous pression. L'air comprimé peut propulser de la poussière ou des particules libres et peut causer des blessures ou des dommages corporels. Éteignez toujours le système et purgez la pression d'air avant de fixer ou de retirer les conduites d'air ou les accessoires ou de procéder à l'entretien de cet appareil. Toutes les conduites d'air doivent être inspectées périodiquement et remplacées si elles sont usées ou endommagées.

Si une alimentation extérieure en air comprimé est utilisée pour alimenter cet appareil, l'alimentation en air doit être régulée à 80 psi ou moins. Une pression d'air excessive peut entraîner la rupture de certains composants.



### WARNING

#### ELECTRICAL VOLTAGE

This system is powered by high voltage electricity. Like any other electrically powered device, if it is not used properly, it can cause electrical shock. Always plug the power cord into an electrical outlet with adequate fuse protection and proper grounding. In the event of a short circuit, grounding reduces the risk of shock by providing an escape wire for the electric current. Improper grounding of the unit can result in a risk of electric shock. Always unplug the unit before doing any service or repair to the unit.

### AVERTISSEMENT

#### TENSION ELECTRIQUE

Ce système est alimenté par de l'électricité à haute tension. Comme tout autre appareil électrique, s'il n'est pas utilisé correctement, il peut provoquer un choc électrique. Branchez toujours le cordon d'alimentation dans une prise électrique avec une protection par fusible adéquate et une mise à la terre appropriée. En cas de court-circuit, la mise à la terre réduit le risque d'électrocution en fournissant un fil d'échappement pour le courant électrique. Une mauvaise mise à la terre de l'appareil peut entraîner un risque d'électrocution. Débranchez toujours l'appareil avant d'effectuer tout entretien ou réparation sur l'appareil.