

HOLDER ARM PIN/SOCKET RETROFIT KIT

ASI TECHNICAL GUIDELINE FOR 95-0384

65-0215 | Rev A1 | 05/19/23 | Page 1 of 2

PURPOSE

This technical guideline provides instructions to install a holder arm pin/socket retrofit kit.

PARTS INCLUDED

- Holder arm pin/socket retrofit kit

TOOLS REQUIRED

- Phillips head screwdriver
- 5/64" Allen wrench

INSTRUCTIONS

- 1 Turn off main power. Unplug unit from outlet and air supply to unit.
- 2 Remove the screws holding the mounting bracket to the cart.
- 3 Install the new mounting bracket onto the cart using the provided screws.

i *Make sure the flange on the bearing is facing up, see Fig. 1.*

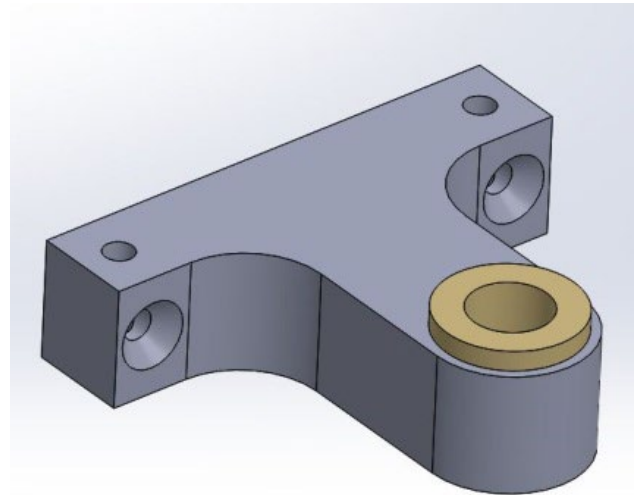


Fig. 1

HOLDER ARM PIN/SOCKET RETROFIT KIT

ASI Technical Guideline for 95-0384

65-0215 | Rev A1 | 05/19/23 | Page 2 of 2

- 4 Remove the hardware from the arm that was connected to the old mounting block.
- 5 Install the pivot shaft pin into the arm, so that the pin hangs out the bottom of the arm. (Fig. 2)

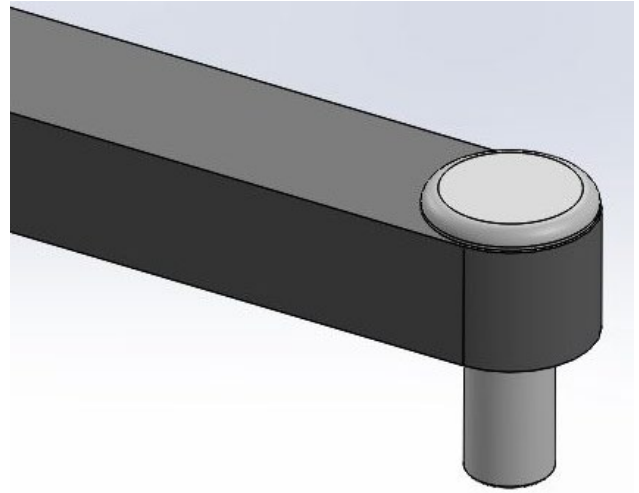


Fig. 2

- 6 Insert the pin from the arm into the mounting block. (Fig. 3)

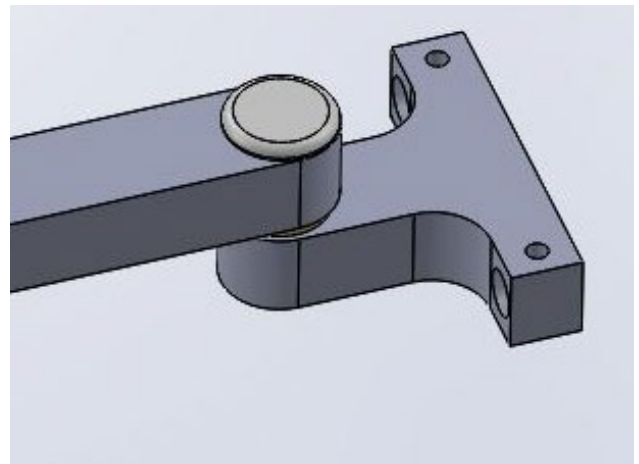


Fig. 3