

AIR COMPRESSOR 115V

ASI TECHNICAL GUIDELINE FOR 95-0197 WITH 95-0416

65-0191 | Rev A1 | 05/03/23 | Page 1 of 7

PURPOSE

The purpose of this technical guideline is to provide the end-user with instructions to remove and replace an air compressor into an ASI delivery system. This technical guide applies to the following service products:

- 95-0197, Air Compressor, 120V, 100psi Standard Pressure [pre 10/2006 models]
- 95-0416, Air Compressor Manifold, 115V

PARTS INCLUDED

- Air Compressor

TOOLS REQUIRED

- 7/16" Allen wrench
- Two 9/16" open-ended wrenches
- Small flat head screwdriver
- Hex head screwdriver

IMPORTANT!

Before commencing on the following instructions, please read and follow all applicable warnings/cautions listed at the end of this technical guideline.

INSTRUCTIONS FOR STANDARD DESIGN

Instructions for installing in systems with a gray slide design begin with Step 11 below.

- 1 Turn off main power and unplug unit from power outlet.
- 2 Run Air Syringe to relieve all compressed air in system or for units with manual purge, open the "Air Tank Purge Valve" on rear door.
- 3 Open door located on the back of the unit using a flat head screwdriver.

AIR COMPRESSOR 115V

ASI Technical Guideline for 95-0197 with 95-0416

65-0191 | Rev A1 | 05/03/23 | Page 2 of 7

- 4 Locate nylon, white semi-opaque tubing connected to the compressor. Disconnect the tubing from the compressor by pressing down on the ring with one thumb, push the tubing down into connector, and then lift tubing out of the connector. (Fig. 1)

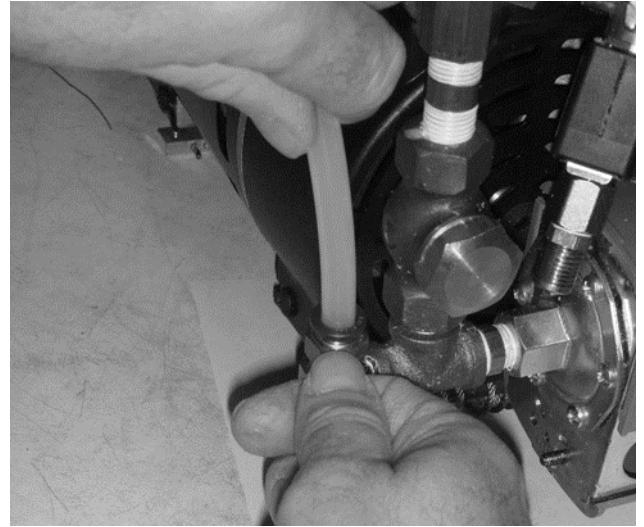


Fig. 1

- 5 Locate black and white wires coming from the compressor and follow them to the terminal block. Using a small flat head screwdriver, loosen screw in location "3" for removing black wire and location "4" for removing white wire. These positions are shown in Fig. 2 and Fig. 3)

i All wires that will be disconnected are on the left side of the terminal block.

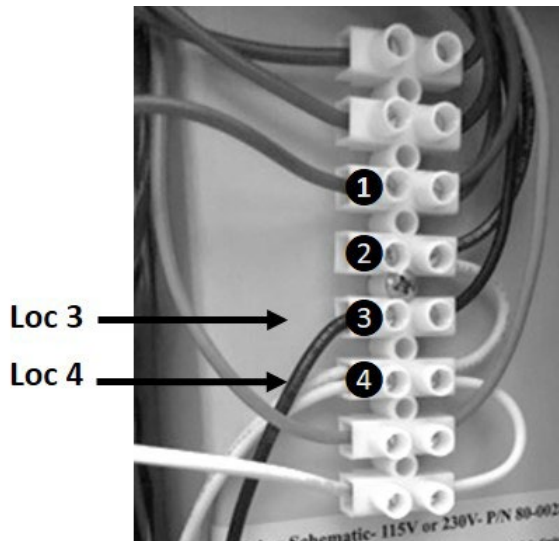


Fig. 2 - Eight-position terminal for SN 180119 and earlier

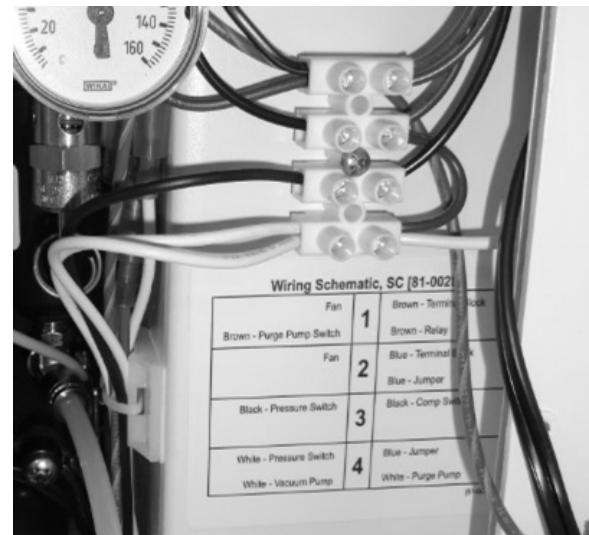


Fig. 3 - Four-position terminal for SN 180120 and later

- 6 Locate the three locking hex head bolts on the bottom of the metal plate holding the compressor. There are two in the front and one in the center on the left side. Remove them using a 7/16" wrench or socket and set aside. (Fig. 3)

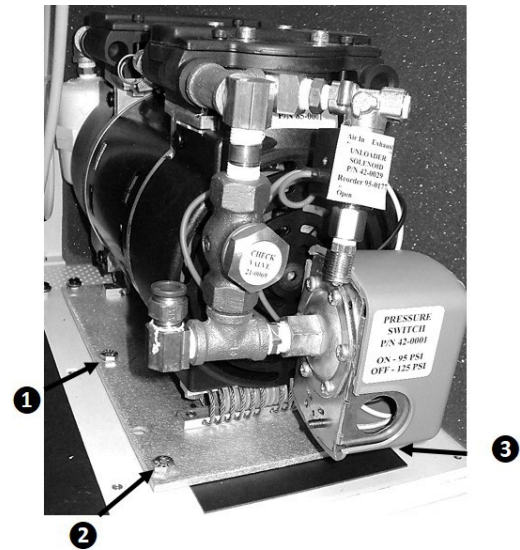


Fig. 4

- 7 Once the bolts have been removed, carefully lift, and slide the compressor motor with plate out and remove from the chassis.

i *The compressor might need to be rocked back and forth to remove.*

- 8 After the compressor is removed from the chassis, use the 7/16" wrench or socket to remove the spring isolators and mounting plate from the old compressor. Attach the spring isolators to the new compressor.

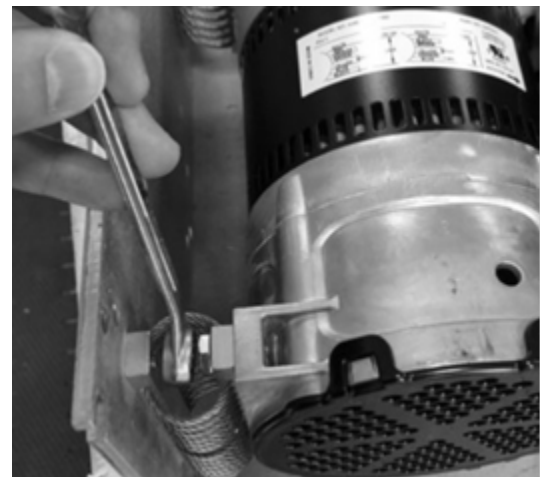


Fig. 5

- 9 Reinstall the replacement compressor by sliding the compressor with plate in towards the chassis. The compressor might need to be rocked back and forth to get it into position.
- 10 Complete the installation by following Steps 3 through 6 in reverse order.
- 11 Restore power to the unit and test for correct installation by checking for leaks and proper function.

AIR COMPRESSOR 115V

ASI Technical Guideline for 95-0197 with 95-0416

65-0191 | Rev A1 | 05/03/23 | Page 4 of 7

- 12 Follow Steps 1-5 above.
- 13 Locate the locking bolts attaching the compressor to the bottom of the unit. Remove screws using a 7/16" wrench or socket. (Fig. 6)

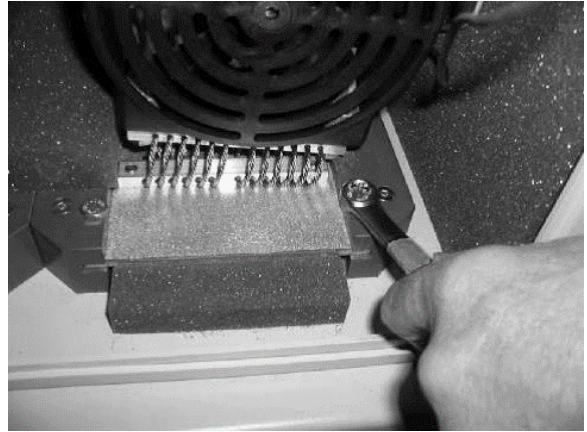


Fig. 6

- 14 Locate the six 10/32 socket screws on both sides of the compressor and remove using the hex head screwdriver. (Fig. 7)

i *To access more easily the second and third screws, lean the compressor slightly.*

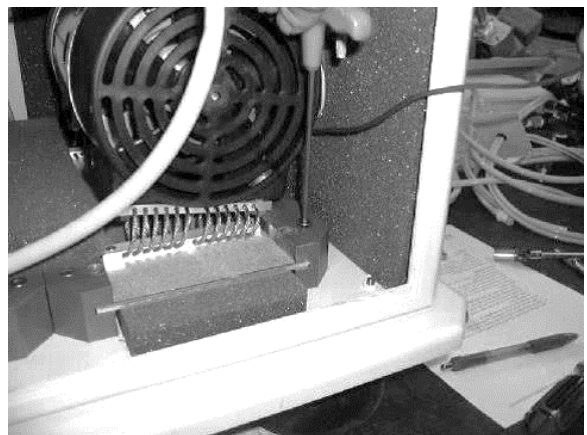


Fig. 7

- 15 Remove the compressor out of the unit with gray slides attached.
i *The foam underneath the compressor may be damaged when removing the compressor. This foam aids in deafening sound, therefore replace the foam if there is significant damage.*
- 16 Reinstall replacement compressor by sliding into place.
- 17 First, follow Steps 13 and 14 in reverse order. Then, follow Steps 3 through 5 in reverse order.
- 18 Restore power to the unit and test for correct installation by checking for leaks and proper function.

INSTRUCTIONS FOR COMPRESSOR MANIFOLD (115V ONLY)

- 19 Remove the cap on the pressure switch and disconnect the black wire from terminal #1 and the white wire from terminal #3 on pressure switch (Fig. 8 and Fig. 9)

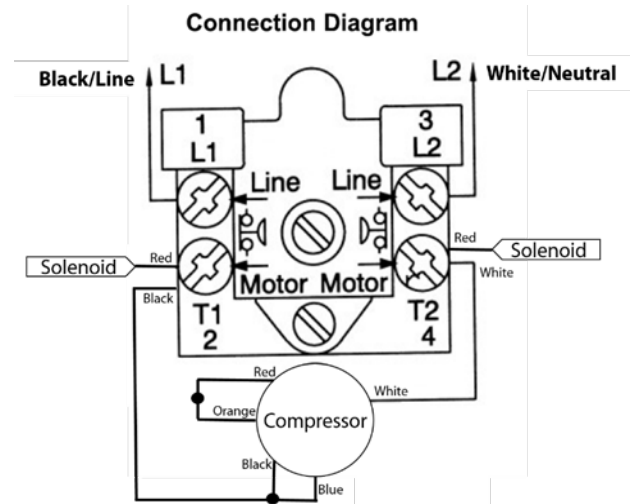


Fig. 8

- 20 Disconnect the blue and black wires from terminal #2 and the white wire from terminal #4 on the pressure switch.

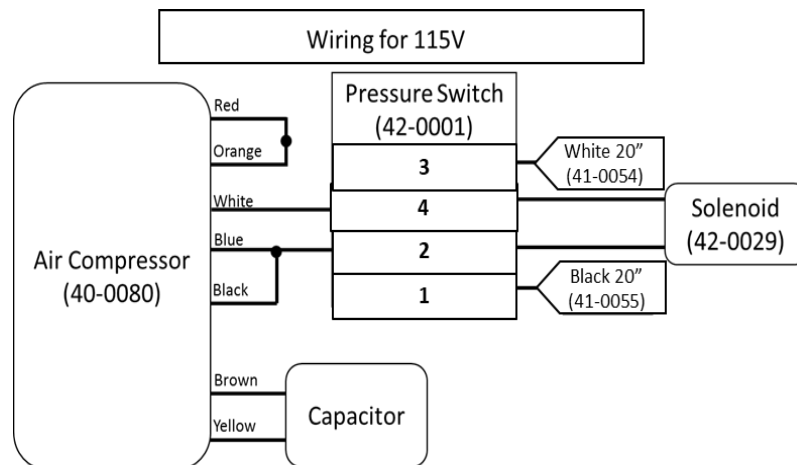


Fig. 9

AIR COMPRESSOR 115V

ASI Technical Guideline for 95-0197 with 95-0416

65-0191 | Rev A1 | 05/03/23 | Page 6 of 7

- 21 Remove the compressor manifold from the compressor at the point highlighted (Fig. 10).

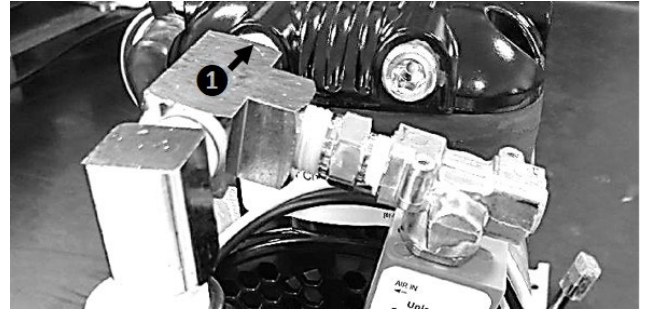


Fig. 10

- 22 For compressor manifold install, reverse the actions completed in steps 1 through 4.

WARNINGS/CAUTIONS

In addition to observing the normal precautions associated with standard dental practices and procedures, the following additional precautions should be strictly noted and observed during the set-up, operation, and maintenance of this system.



⚠ WARNING

QUALIFIED PERSONNEL ONLY

The product should only be operated by qualified personnel only. The operator bears responsibility for the correct settings and proper use of the system. ASI Dental (ASI) cannot be held liable for any malfunction of this product, or performance failure and/or its designed or desired utility, nor can ASI be held liable for injuries to persons or animals, in any case when the device is misused or not operated, applied or maintained in strict accordance with user/owner instructions set out in the operation manual. In the event of any doubt or question, the user is to contact ASI for clarification or assistance.

Improperly maintained or operated systems or instruments may void the associated warranties.

⚠ AVERTISSEMENT

PERSONNEL QUALIFIÉ UNIQUEMENT

Le produit ne doit être utilisé que par du personnel qualifié. L'exploitant est responsable des réglages corrects et de l'utilisation correcte du système. ASI Dental (ASI) ne peut être tenu responsable de tout dysfonctionnement de ce produit, ou d'une défaillance de performance et/ou de son utilité conçue ou souhaitée, et ASI ne peut être tenu responsable des blessures aux personnes ou aux animaux, en tout cas lorsque l'appareil est mal utilisé ou pas utilisé, appliqué ou entretenu en stricte conformité avec les instructions de l'utilisateur/propriétaire énoncées dans le manuel d'utilisation. En cas de doute ou de question, l'utilisateur doit contacter ASI pour obtenir des éclaircissements ou de l'aide.

Des systèmes ou instruments mal entretenus ou mal exploités peuvent annuler les garanties associées.



⚠ WARNING

COMPRESSED AIR

The compressed air system that operates this unit is under pressure. Compressed air can propel dust or loose particles and can cause bodily injury or damage. Always turn the system off and bleed off air pressure before attaching or removing air lines or accessories or servicing this unit. All air lines should be periodically inspected and replaced if worn or damaged.

If an outside compressed air supply is used to power this unit, the air supply must be regulated to 80 psi or below. Excessive air pressure could cause certain components to rupture.

⚠ AVERTISSEMENT

AIR COMPRIMÉ

Le système d'air comprimé qui fait fonctionner cet appareil est sous pression. L'air comprimé peut propulser de la poussière ou des particules libres et peut causer des blessures ou des dommages corporels. Éteignez toujours le système et purgez la pression d'air avant de fixer ou de retirer les conduites d'air ou les accessoires ou de procéder à l'entretien de cet appareil. Toutes les conduites d'air doivent être inspectées périodiquement et remplacées si elles sont usées ou endommagées.

Si une alimentation extérieure en air comprimé est utilisée pour alimenter cet appareil, l'alimentation en air doit être régulée à 80 psi ou moins. Une pression d'air excessive peut entraîner la rupture de certains composants.



WARNING

ELECTRICAL VOLTAGE

This system is powered by high voltage electricity. Like any other electrically powered device, if it is not used properly, it can cause electrical shock. Always plug the power cord into an electrical outlet with adequate fuse protection and proper grounding. In the event of a short circuit, grounding reduces the risk of shock by providing an escape wire for the electric current. Improper grounding of the unit can result in a risk of electric shock. Always unplug the unit before doing any service or repair to the unit.

AVERTISSEMENT

TENSION ELECTRIQUE

Ce système est alimenté par de l'électricité à haute tension. Comme tout autre appareil électrique, s'il n'est pas utilisé correctement, il peut provoquer un choc électrique. Branchez toujours le cordon d'alimentation dans une prise électrique avec une protection par fusible adéquate et une mise à la terre appropriée. En cas de court-circuit, la mise à la terre réduit le risque d'électrocution en fournissant un fil d'échappement pour le courant électrique. Une mauvaise mise à la terre de l'appareil peut entraîner un risque d'électrocution. Débranchez toujours l'appareil avant d'effectuer tout entretien ou réparation sur l'appareil.