

PURPOSE

This technical guideline provides instructions on how to retrofit a self-contained cart for exhausting nitrous outside.

CONTENTS

PARTS INCLUDED.....1

TOOLS REQUIRED1

INSTRUCTIONS.....1

APPENDIX 1: INSTALLATION GUIDE 65-0026.....6

WARNINGS.....7

PARTS INCLUDED

- Nitrous Exhaust Hose (26" and 12.5')
- Quick Connect, Straight-thru
- Nitrous Exhaust Wall Plate w/ Shut-off Quick Connect
- Nitrous Exhaust Wall Box
- Nitrous Exhaust Vent Adapter Assembly
- 3/4" Vacuum Hose Barb
- Remote Exhaust Hose Barb Assembly
- Hose Clamps (qty. 2)
- Zip Tie

TOOLS REQUIRED

- Screwdriver, Phillips #2 and Flat Head
- Wrench Set
- Adjustable Wrench
- 7/16" Socket/Wrench
- 1/4" Nut Driver
- 1-1/8" (1.125") Drill Bit / Drill

INSTRUCTIONS

1. Turn off main power, unplug the unit from outlet and de-pressurize the unit.

2. Remove the vacuum pump from the chassis;
 - a. Remove the clear suction tubing from the brass barb by loosening the hose clamp securing it.
 - b. Remove the three (3) hex head screws, from the base of the vacuum pump, using a 7/16 socket wrench. (Fig. 1)
 - c. Loosen the two Phillips head screws in the back of the vacuum pump. (Fig. 1)
NOTE: You may need to remove the front access panel, if available, in order to loosen these screws.
 - d. Pull the vacuum pump forward so you have access to the filter silencer manifold on the top of the vacuum pump. (Fig. 2)

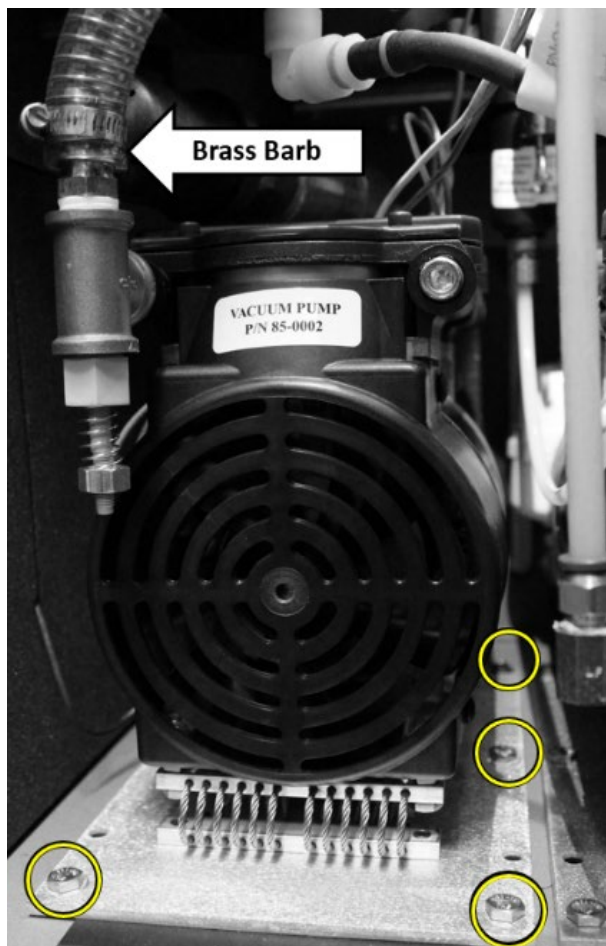


Fig. 1



Fig. 2

3. Remove the black muffler from the manifold.

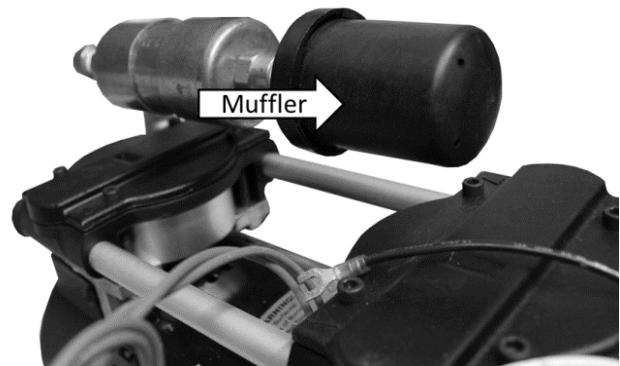


Fig. 3

4. Attach the 3/4" hose barb to the vacuum manifold.

NOTE: Use Teflon tape on the threads to prevent leaking.

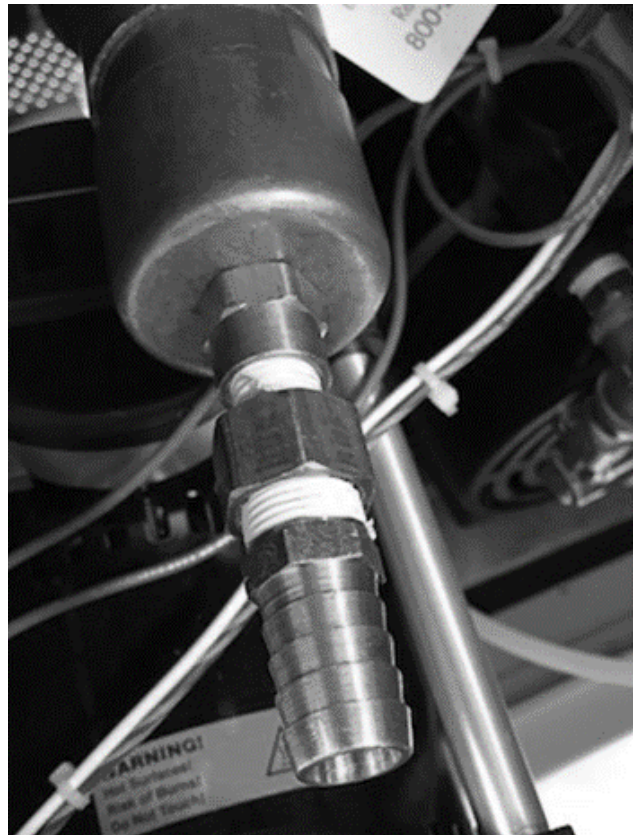


Fig. 4

- Depending on the date of manufacture of your cart, remove the suction bulkhead from the chassis (Fig. 5) or remove the hole plug, or knock out the 1.25" hole knockout on the back panel.

NOTE: The suction bulkhead may have a clear suction hose connected to it with a hose clamp. If so, disconnect the tubing before removing the bulkhead. Once the bulkhead is removed, re-plug the suction hose, internal to the chassis, with the suction bulkhead and secure it with the hose clamp (Fig. 6).

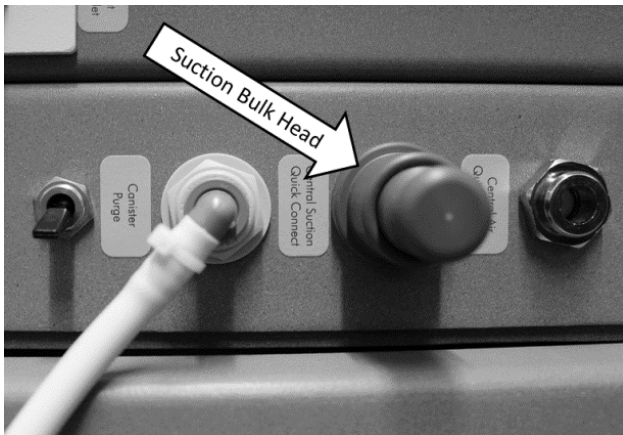


Fig. 5

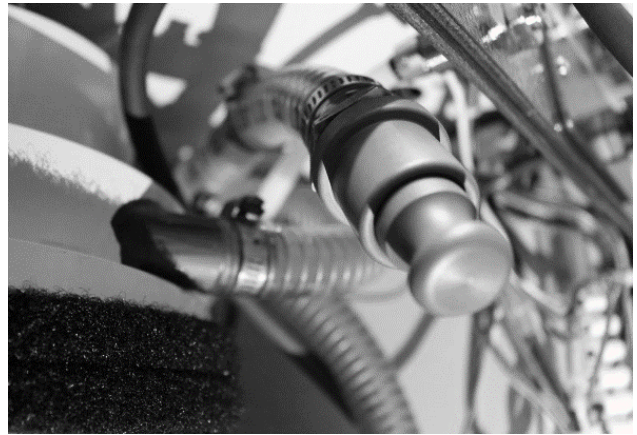


Fig. 6

- If you had the suction bulkhead or the hole plug, you will need to drill the hole out to increase it to 1-1/8" (1.125").
- Attaching the exhaust tubing:
 - Attach the 26" piece nitrous exhaust tubing to the 3/4" hose bar and secure it with the provided hose clamp (Fig. 7).

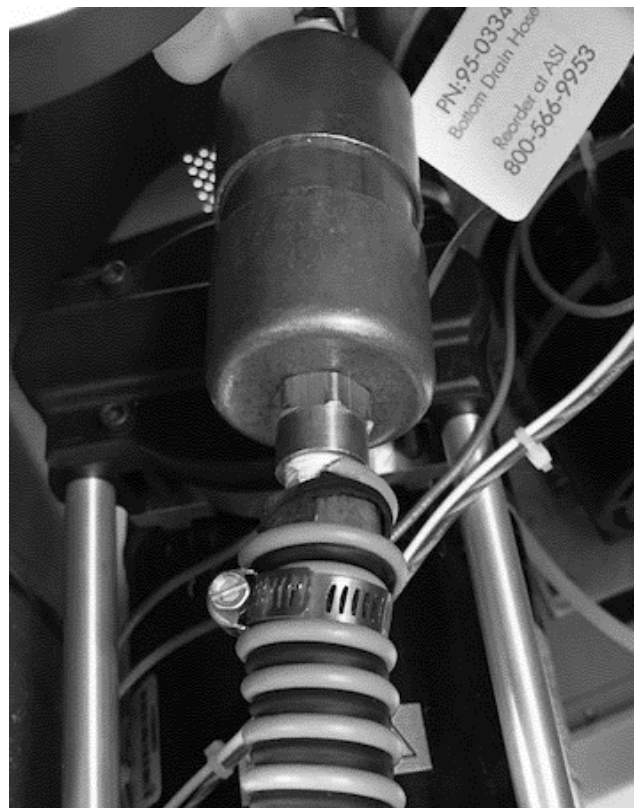


Fig. 7

8. Install quick connect into the hole on the back of the chassis.

Connect the other end of the 26" exhaust hose to the barb on the quick connect, secure it using a hose clamp.

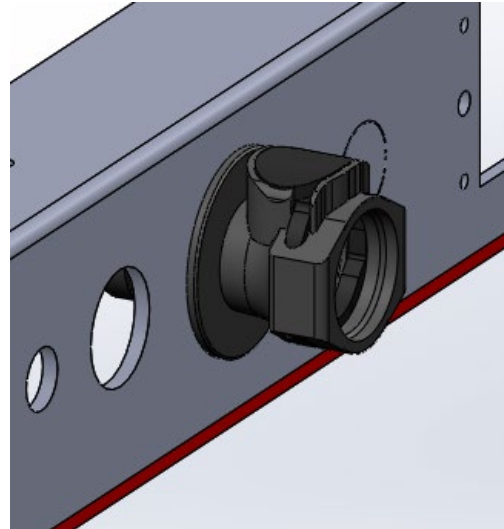


Fig. 8

9. OPTIONAL – Remote Exhaust

- Remove one quick connect from the exhaust hose.
- Take the remote exhaust hose barb assembly and attach it to the muffler that was removed
- **NOTE:** Use Teflon tape on the threads to prevent leaking.
- Install the muffler assembly to the end of the exhaust hose and secure with a hose clamp.
- Using a zip tie connect the label to the hose near the muffler.



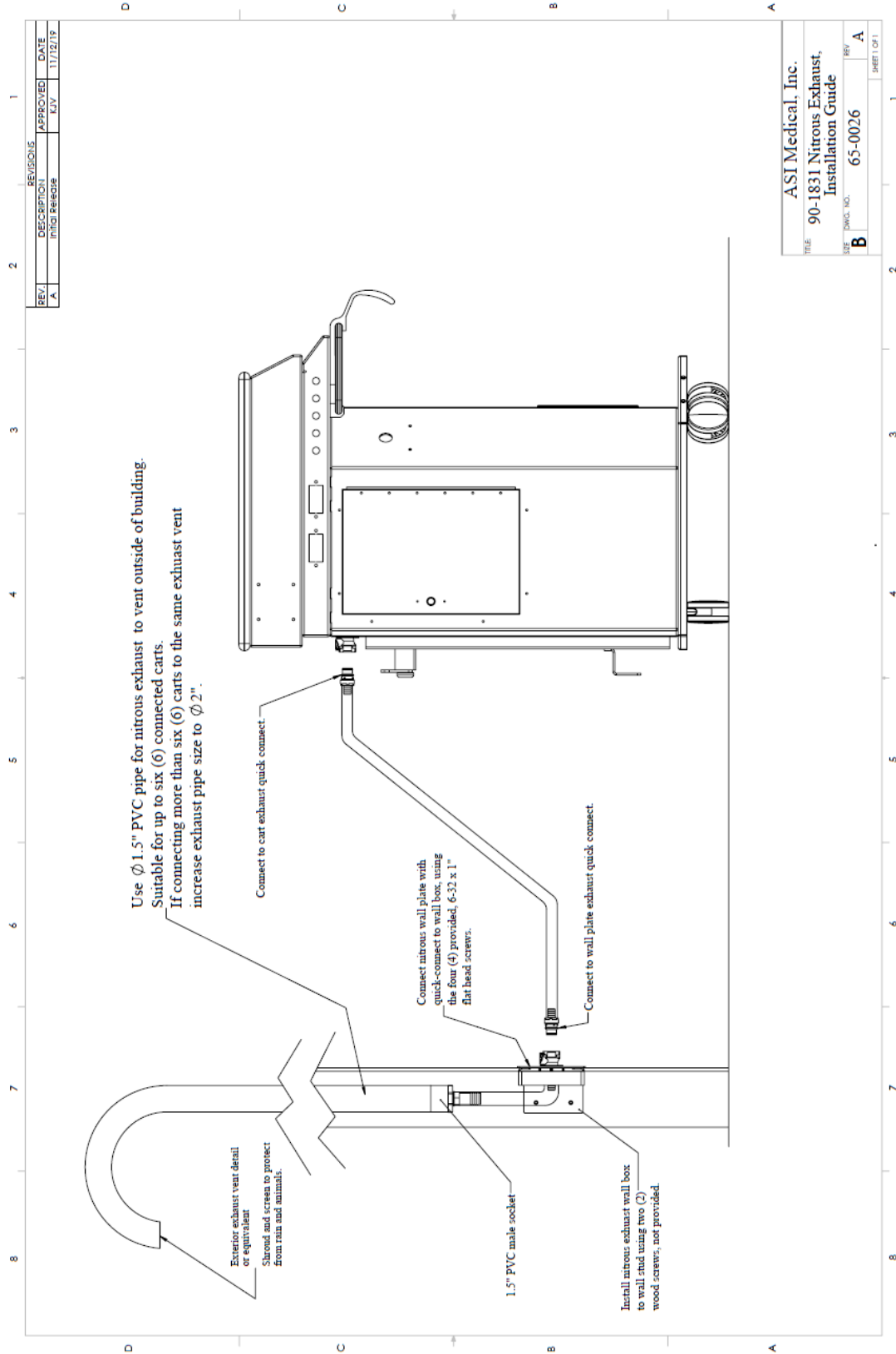
Fig. 9

10. OPTIONAL – Nitrous Exhaust

Install the nitrous exhaust wall box and ventilation per installation guide 65-0026, see Appendix 1.

11. Connect the 12.5' exhaust hose from the cart to the wall box.

APPENDIX 1: INSTALLATION GUIDE 65-0026



WARNINGS



WARNING! Only qualified personnel should service or repair this device. This device should only be serviced/repaired by a qualified service technician who is proficient in the repair of electromechanical dental equipment and who understands the complexities and risks of working within the device and observes proper safety precautions.



WARNING – Compressed Air. The compressed air system that operates this unit is under pressure. Compressed air can propel dust or loose particles and can cause bodily injury or damage. Always turn the system off and bleed off air pressure before attaching or removing air lines or accessories or servicing this unit. All air lines should be periodically inspected and replaced if worn or damaged. If an outside compressed air supply is used to power this unit, the air supply must be regulated to 80 psi or below. Excessive air pressure could cause certain components to rupture.



WARNING – Electrical Voltage. This system is powered by high voltage electricity. Like any other electrically powered device, if it is not used properly, it can cause electrical shock. Always plug the power cord into an electrical outlet with adequate fuse protection and proper grounding. In the event of a short circuit, grounding reduces the risk of shock by providing an escape wire for the electric current. Improper grounding of the unit can result in a risk of electric shock. Always unplug the unit before doing any service or repair to the unit.



WARNING – Presence of Heavy Metals/Amalgam. This cart may be equipped with optional suction instruments. As part of dental procedures, particles of amalgam may be suctioned into the dental suction handpieces and collected within the system and trap filter.