

**PURPOSE**

This technical guideline demonstrates how to open the cover of the delivery unit, providing access to the Control Blocks, Water Relays, and Instruments. Maintenance and repairs should be performed by a qualified technician.

**CONTENTS**

TOOLS REQUIRED FOR OPENING COVER .....1

TOOLS REQUIRED TO REMOVE COVER PLATE.....1

INSTRUCTIONS FOR OPENING THE COVER ON SELF-CONTAINED SERIES CARTS .....1

INSTRUCTIONS FOR CREATING MORE ACCESS: REMOVING THE COVER PLATE.....1

INSTRUCTIONS FOR OPENING THE COVER ON DESIGNER SERIES CARTS.....2

INSTRUCTIONS FOR OPENING THE COVER ON CLASSIC SERIES CARTS .....3

WARNINGS.....5

**TOOLS REQUIRED FOR OPENING COVER**

- Phillips screwdriver for Self-Contained Series, Designer Series
- Flat head screwdriver for Classic Series

**TOOLS REQUIRED TO REMOVE COVER PLATE**

- 5/16" nut driver

**INSTRUCTIONS FOR OPENING THE COVER ON SELF-CONTAINED SERIES CARTS**

For instructions for the Designer Series, please skip ahead to Step 4.  
 For instructions for the Classic Series, please skip ahead to Step 7.

**INSTRUCTIONS FOR CREATING MORE ACCESS: REMOVING THE COVER PLATE**

For instructions for the Classic and Designer Series, go to Step 10.

1. Turn OFF main power and air supply to unit.
2. Lift up and remove the worktop. The worktop is secured using a high-grade plastic Velcro. Due to its weight and the holding power of the Velcro, it will require firm lifting in order to remove.

3. To access the electrical and pneumatic components, locate and remove the top screws securing the rear electrical safety cover using a Phillips screwdriver. (**Fig. 1, Fig. 2**)



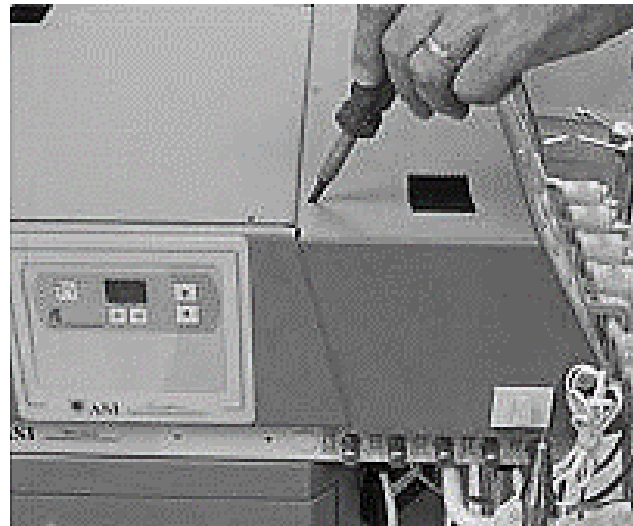
**Fig. 1**



**Fig. 2**

**INSTRUCTIONS FOR OPENING THE COVER ON DESIGNER SERIES CARTS AND CLASSIC CARTS\***  
*(\*manufactured late 2016 and after)*

4. Turn OFF main power and air supply to unit.
5. Lift up and remove the worktop. To access the electrical and pneumatic components, locate and remove the top screws securing the rear electrical safety cover plate using a Phillips screwdriver. (**Fig. 3**)



**Fig. 3**

6. Open cover by lifting forward from front of unit. Cover will hinge into place. Remove electrical safety cover plate. **(Fig. 4)**

**NOTE:** Be sure all instruments are pointed clear of opening cover.



*Fig. 4*

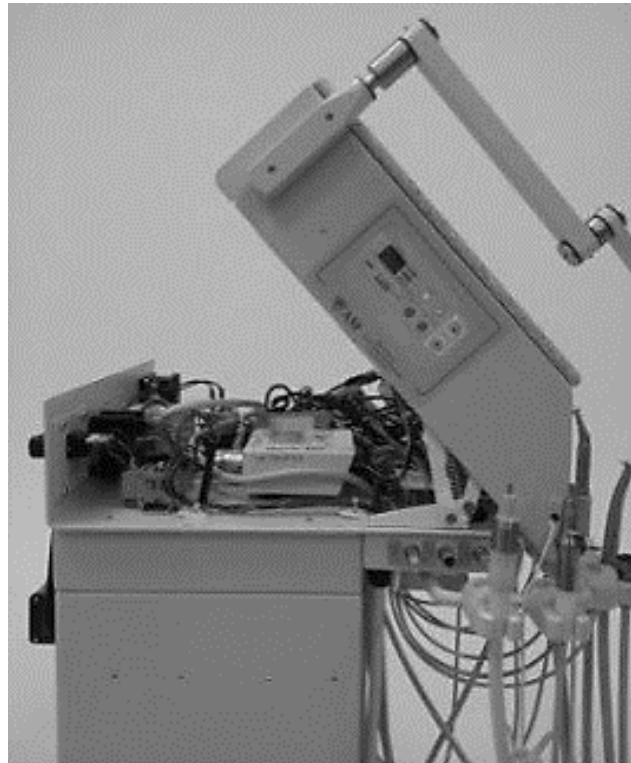
**INSTRUCTIONS FOR OPENING THE COVER ON ARM CARTS AND CLASSIC SERIES CARTS\*\***  
**(\*\*manufactured until late 2016)**

7. Turn OFF main power and air supply to unit.
8. Remove the two thumb screws at base of cover plate using flat head screwdriver. **(Fig. 5)**



*Fig.5 – Arrow shows location of thumb screw*

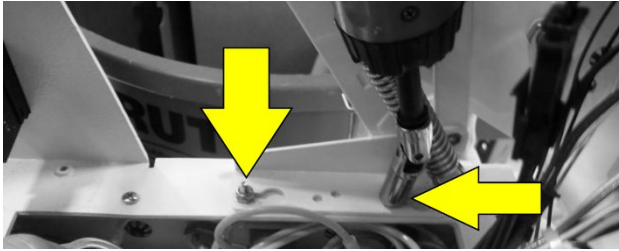
9. Open cover by lifting up from rear of unit. Cover will hinge into place. **(Fig. 6)**



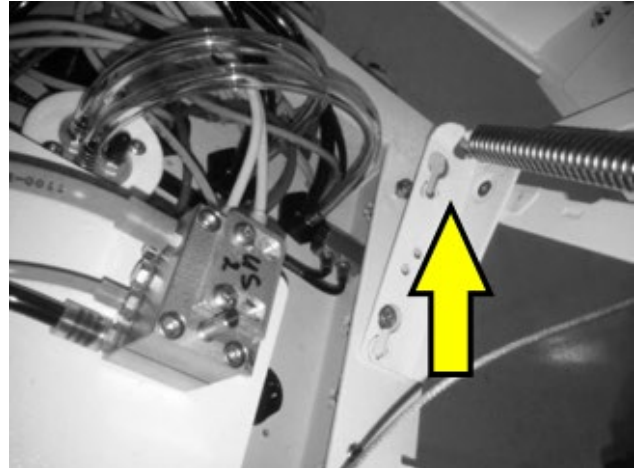
*Fig. 6*

**INSTRUCTIONS FOR CREATING MORE ACCESS: REMOVING THE COVER PLATE**  
**CLASSIC AND DESIGNER SERIES CARTS**

10. Turn OFF main power and air supply to unit.
11. Open cover of unit. Reference previous Steps 7 through 9 for Classic Series and Steps 4 through 6 for Designer Series.
12. Untighten the four (4) nuts holding the hinges to the baseplate using 5/16" nut driver/socket. Move cover forward to larger key holes and lift away from baseplate. **(Fig. 7, Fig. 8)**



*Fig. 7 - Arrows indicate location of nuts*



*Fig. 8 - Arrow indicates key hole clearing nut on baseplate*

13. Set cover back on baseplate.

**NOTE:** Depending on access needed, label and disconnect wire connections and ribbon cables from panels; remove cover.

14. Reassemble the unit. If connections were undone, restore power to unit and test instruments for proper operation.

## WARNINGS



**WARNING!** Only qualified personnel should service or repair this device. This device should only be serviced/repaired by a qualified service technician who is proficient in the repair of electromechanical dental equipment and who understands the complexities and risks of working within the device and observes proper safety precautions.



**WARNING – Compressed Air.** The compressed air system that operates this unit is under pressure. Compressed air can propel dust or loose particles and can cause bodily injury or damage. Always turn the system off and bleed off air pressure before attaching or removing air lines or accessories or servicing this unit. All air lines should be periodically inspected and replaced if worn or damaged. If an outside compressed air supply is used to power this unit, the air supply must be regulated to 80 psi or below. Excessive air pressure could cause certain components to rupture.



**WARNING – Electrical Voltage.** This system is powered by high voltage electricity. Like any other electrically powered device, if it is not used properly, it can cause electrical shock. Always plug the power cord into an electrical outlet with adequate fuse protection and proper grounding. In the event of a short circuit, grounding reduces the risk of shock by providing an escape wire for the electric current. Improper grounding of the unit can result in a risk of electric shock. Always unplug the unit before doing any service or repair to the unit.