



The Leader In Advanced Systems Integration
Advanced Dental Systems® & Advanced Endodontic Systems®
www.asimedical.net | (303) 766-3646

Technical Guideline

Root ZX II Installation

TG-NP-0020

Rev A | 03/06/18 | Page 1 of 4

WARNINGS



WARNING! Only qualified personnel should service or repair this device. This device should only be serviced/repared by a qualified service technician who is proficient in the repair of electromechanical dental equipment and who understands the complexities and risks of working within the device and observes proper safety precautions.



WARNING – Compressed Air. The compressed air system that operates this unit is under pressure. Compressed air can propel dust or loose particles and can cause bodily injury or damage. Always turn the system off and bleed off air pressure before attaching or removing air lines or accessories or servicing this unit. All air lines should be periodically inspected and replaced if worn or damaged. If an outside compressed air supply is used to power this unit, the air supply must be regulated to 80 psi or below. Excessive air pressure could cause certain components to rupture.



WARNING – Electrical Voltage. This system is powered by high voltage electricity. Like any other electrically powered device, if it is not used properly, it can cause electrical shock. Always plug the power cord into an electrical outlet with adequate fuse protection and proper grounding. In the event of a short circuit, grounding reduces the risk of shock by providing an escape wire for the electric current. Improper grounding of the unit can result in a risk of electric shock. Always unplug the unit before doing any service or repair to the unit.

PARTS INCLUDED

- 4/40 nuts (4)
- Adapter panel with display board attached and link harness (1)
- Plate:
 - Shelf plate for Designer models
 - Support plate for Classic models
- Flat head screws (2)
for Classic Model only
- Cable tie, 4"
- Probe cord wrap
- Batteries, size AA (3)
- Probe Cord Bracket
- Velcro tape

TOOLS REQUIRED

- 1/4" nut driver



The Leader In Advanced Systems Integration
Advanced Dental Systems® & Advanced Endodontic Systems®
www.asimedical.net | (303) 766-3646

Technical Guideline

Root ZX II Installation

TG-NP-0020

Rev A | 03/06/18 | Page 2 of 4

INSTRUCTIONS

1. Before handling any circuit boards, be sure to follow good Electrostatic Discharge practices
2. You should have 1 adapter panel with display board attached and link harness, 1 white plastic enclosure with main board, Velcro on bottom and 3 (AA) batteries, 1 probe cord, 4 of (4-40) nuts, and 1 probe cord bracket.
3. Mount the adapter panel to the cover using four (4) 4/40 nuts. **(Fig. 1)**



Fig. 1

4. Attach Shelf or Support Plate, depending on your cart model:
 - **Designer Model:** Use the shelf provided. Attach by loosening the bottom two (2) 4/40 nuts on the adapter panel. Slide on with the bend going down; retighten the nuts. **(Fig. 2)**
 - **Classic Model:** Use the support plate provided. Attach by using two (2) flat head screws. With the cover setting on its top, place the shelf under the lip of the cover, line up the holes, put in the screws.



Fig. 2



The Leader In Advanced Systems Integration
Advanced Dental Systems® & Advanced Endodontic Systems®
www.asimedical.net | (303) 766-3646

Technical Guideline

Root ZX II Installation

TG-NP-0020

Rev A | 03/06/18 | Page 3 of 4

- Run the probe wires through the side hole (see **Fig. 3**; arrow) in the cover. Attach to the plug on the side of the enclosure. Run a cable tie through the screw hole (see **Fig. 3**, arrow) in the enclosure, securing the probe wires to the base as a strain relief.

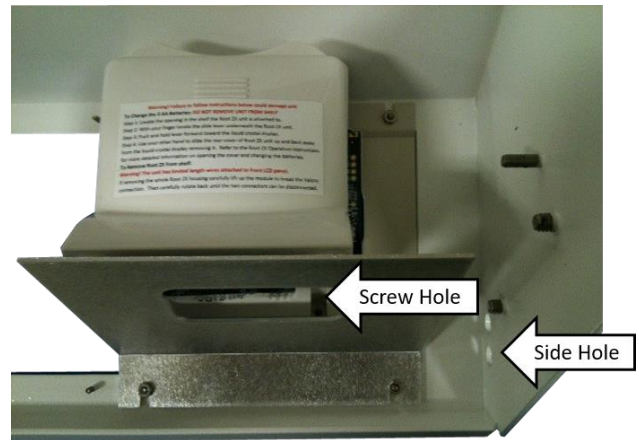


Fig. 3

- Install the enclosure on the shelf, holding it in place with the Velcro. Reattach the wire harness from the front circuit board to the back circuit board in the enclosure. (**Fig. 4**)



Fig. 4



The Leader In Advanced Systems Integration
Advanced Dental Systems® & Advanced Endodontic Systems®
www.asimedical.net | (303) 766-3646

Technical Guideline

Root ZX II Installation

TG-NP-0020

Rev A | 03/06/18 | Page 2 of 4

7. Attach the Probe Cord Wrap to the side of cover, using the two (2) screws provided with the Cord Wrap Assembly. (**Fig. 5**)



Fig. 5