



ASI

The Leader In Advanced Systems Integration
Advanced Dental Systems® & Advanced Endodontic Systems®
www.asimedical.net | (303) 766-3646

Technical Guideline

Removing Arm Unit/Replacing Arm

TG-NP-0010

Rev A | 05 Nov 2015 | Page 1 of 6

PURPOSE

This guideline is for removal of arm units and replacing the arm.



WARNING! Only qualified personnel should service or repair this device. This device should only be serviced/repared by a qualified service technician who is proficient in the repair of electromechanical dental equipment and who understands the complexities and risks of working within the device and observes proper safety precautions.



WARNING – Compressed Air. The compressed air system that operates this unit is under pressure. Compressed air can propel dust or loose particles and can cause bodily injury or damage. Always turn the system off and bleed off air pressure before attaching or removing air lines or accessories or servicing this unit. All air lines should be periodically inspected and replaced if worn or damaged. If an outside compressed air supply is used to power this unit, the air supply must be regulated to 80 psi or below. Excessive air pressure could cause certain components to rupture.



WARNING – Electrical Voltage. This system is powered by high voltage electricity. Like any other electrically powered device, if it is not used properly, it can cause electrical shock. Always plug the power cord into an electrical outlet with adequate fuse protection and proper grounding. In the event of a short circuit, grounding reduces the risk of shock by providing an escape wire for the electric current. Improper grounding of the unit can result in a risk of electric shock. Always unplug the unit before doing any service or repair to the unit.

TOOLS REQUIRED

- Phillips head screwdriver
- Side cutters or scissors
- Small flat head screwdriver
- Large flat head screwdriver

NOTE: Completing with a second technician may assist due to the cumbersome unit as well as re-tubing the arm.

INSTRUCTIONS

1. Turn the main power off, unplug the unit, and shut off the air supply
2. Open the cover of the delivery system. Refer to ASI Technical Guide TG-NP-0002, *“Opening Cover of Unit and Creating More Access: Removing Cover Plate”*.



The Leader In Advanced Systems Integration
Advanced Dental Systems® & Advanced Endodontic Systems®
www.asimedical.net | (303) 766-3646

Technical Guideline

Removing Arm Unit/Replacing Arm

TG-NP-0010

Rev A | 05 Nov 2015 | Page 2 of 6

3. Remove the main power cord from the terminal block and the grounding wire. (Fig. 1) Refer to ASI Technical Guideline TG-NP-0009, "Terminal Block".

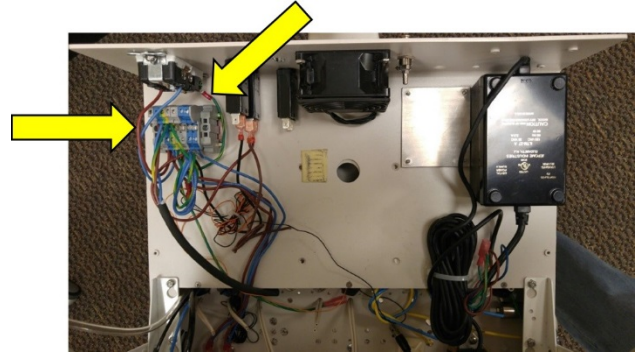


Fig. 1

4. Locate the plate under the head of the delivery system. Remove the screws using a Phillips head screwdriver. (Fig. 2)



Fig. 2



ASI

The Leader In Advanced Systems Integration
Advanced Dental Systems® & Advanced Endodontic Systems®
www.asimedical.net | (303) 766-3646

Technical Guideline

Removing Arm Unit/Replacing Arm

TG-NP-0010

Rev A | 05 Nov 2015 | Page 3 of 6

5. After removing the plate, tubing and wiring coming from the baseplate of the arm will be exposed. (Fig. 3)



Fig. 3

6. Cut the tubing from the head of the delivery system using side cutters or scissors.

NOTE: When reconnecting, 1/8" and 1/16" barbs can be used.

7. Lift up on the delivery system to its apex. (Fig. 4; Fig. 5)



Fig. 4



Fig. 5



The Leader In Advanced Systems Integration
Advanced Dental Systems® & Advanced Endodontic Systems®
www.asimedical.net | (303) 766-3646

Technical Guideline

Removing Arm Unit/Replacing Arm

TG-NP-0010

Rev A | 05 Nov 2015 | Page 4 of 6

8. Shimmy the knuckle out of the bushing. (Fig. 6)



Fig. 6

9. The knuckle will pass the bushing. (Fig. 7)



Fig. 7

10. Tubing will pull through as the arm is set down. (Fig. 8)



Fig. 8

11. Set the delivery system down on the floor or a table if available. Pull the remaining tubing through the knuckle. (Fig. 9)



Fig. 9



ASI

The Leader In Advanced Systems Integration
Advanced Dental Systems® & Advanced Endodontic Systems®
www.asimedical.net | (303) 766-3646

Technical Guideline

Removing Arm Unit/Replacing Arm

TG-NP-0010

Rev A | 05 Nov 2015 | Page 5 of 6

12. Remove the arm from the delivery system head by unthreading the nut. Attach new arm. (Fig. 10)

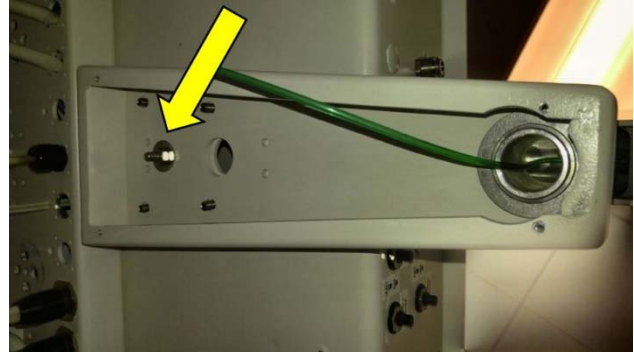


Fig. 10

13. Use electrical tape or duct tape to tape together the ends of the tubing and wiring. Pull the tubing through the arm. Check for pinch points at the knuckles to prevent air pressure, suction, and water/solution may have flow issues. (Fig. 11)



Fig. 11

14. Reconnect the tubing with connector barbs and rewire the power cord to the terminal block.
15. Reverse the steps for mounting the arm to the post, careful not to pinch the tubing off when resetting.



ASI

The Leader In Advanced Systems Integration
Advanced Dental Systems® & Advanced Endodontic Systems®
www.asimedical.net | (303) 766-3646

Technical Guideline

Removing Arm Unit/Replacing Arm

TG-NP-0010

Rev A | 05 Nov 2015 | Page 6 of 6

16. Confirm the arm has the desired tension to assist in lifting and holding the unit head.

NOTE: Adjusting the spring support of the delivery system: The counter-balance spring is set for the approximate weight of the delivery system. However, if additional items will be placed onto the system, the spring tension may need to be increased. (Fig. 12)

17. To adjust, remove the bottom cover from the flexible arm and locate the access hole in the arm for the spring and adjusting gear. To increase the weight capacity of the arm, use a large screwdriver to turn the gear clockwise to tighten or compress the spring. To reduce the weight capacity of the arm, loosen the gear. (Fig. 13)



Fig. 12



Fig. 13

18. If leveling is needed, refer to the operation/installation manual for more information.

19. Restore power and air supply to the unit. Verify correct installation by checking for proper function.