



ASI

The Leader In Advanced Systems Integration
Advanced Dental Systems® & Advanced Endodontic Systems®
www.asimedical.net | (303) 766-3646

Technical Guideline

Adjusting the Pressure Switch

TG-NP-0003

Rev A | 22 Jul 2015 | Page 1 of 4

PURPOSE

Relief Valve is exhausting air causing compressor to run in intervals. Adjusting the pressure switch will lower pressure to the air tanks while achieving 80 psi at the Regulator/Master Air.

CONTENTS

WARNINGS & CAUTIONS	1
PARTS INCLUDED.....	1
TOOLS REQUIRED.....	1
INSTRUCTIONS.....	2

WARNINGS & CAUTIONS



WARNING! Only qualified personnel should service or repair this device. This device should only be serviced/ repaired by a qualified service technician who is proficient in the repair of electromechanical dental equipment and who understands the complexities and risks of working within the device and observes proper safety precautions.



WARNING – Compressed Air. The compressed air system that operates this unit is under pressure. Compressed air can propel dust or loose particles and can cause bodily injury or damage. Always turn the system off and bleed off air pressure before attaching or removing air lines or accessories or servicing this unit. All air lines should be periodically inspected and replaced if worn or damaged. If an outside compressed air supply is used to power this unit, the air supply must be regulated to 80 psi or below. Excessive air pressure could cause certain components to rupture.



WARNING – Electrical Voltage. This system is powered by high voltage electricity. Like any other electrically powered device, if it is not used properly, it can cause electrical shock. Always plug the power cord into an electrical outlet with adequate fuse protection and proper grounding. In the event of a short circuit, grounding reduces the risk of shock by providing an escape wire for the electric current. Improper grounding of the unit can result in a risk of electric shock. Always unplug the unit before doing any service or repair to the unit.

PARTS INCLUDED

- None.

TOOLS REQUIRED

- Flat head screwdriver
- Crescent wrench



ASI

The Leader In Advanced Systems Integration
Advanced Dental Systems® & Advanced Endodontic Systems®
www.asimedical.net | (303) 766-3646

Technical Guideline

Adjusting the Pressure Switch

TG-NP-0003

Rev A | 22 Jul 2015 | Page 2 of 4

INSTRUCTIONS

1. Turn off main power; unplug unit from power outlet.
2. Run air/water syringe to relieve compressed air in system.
3. Open the back panel of the unit using a flat head screwdriver. There are two quick-turn screws on the back of the unit. Move suction tube and electrical cord out of the way of the back door. (Fig. 1)



Fig. 1



ASI

The Leader In Advanced Systems Integration
Advanced Dental Systems® & Advanced Endodontic Systems®
www.asimedical.net | (303) 766-3646

Technical Guideline

Adjusting the Pressure Switch

TG-NP-0003

Rev A | 22 Jul 2015 | Page 3 of 4

4. Locate the pressure switch on the manifold assembly of the compressor. Remove pressure switch cover using a crescent wrench by unthreading the nut on the right side counter-clockwise. (Fig. 2)

Pull gray cover off. (Fig. 3)

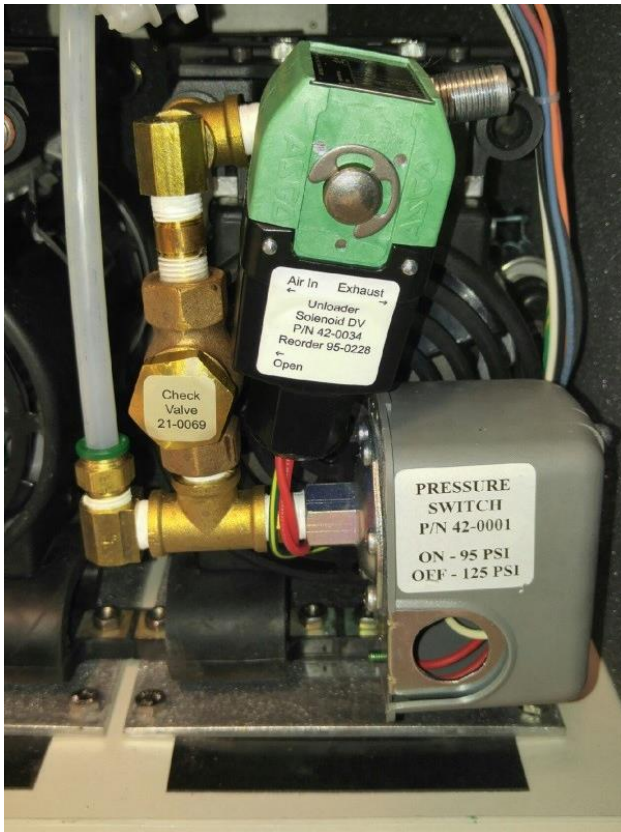


Fig. 2



Fig. 3



ASI

The Leader In Advanced Systems Integration
Advanced Dental Systems® & Advanced Endodontic Systems®
www.asimedical.net | (303) 766-3646

Technical Guideline

Adjusting the Pressure Switch

TG-NP-0003

Rev A | 22 Jul 2015 | Page 4 of 4

- Using a crescent wrench, turn nut on thread four complete 360-degree turns counter-clockwise to reduce spring tension. (Fig. 4)

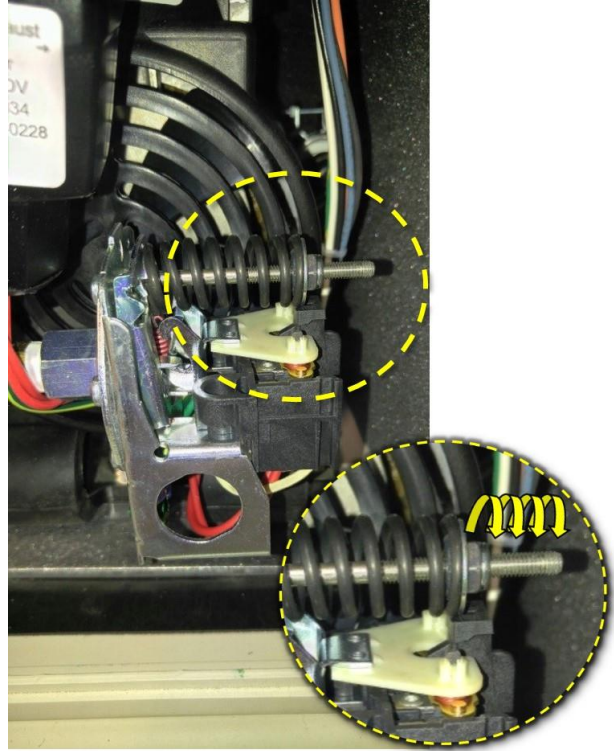


Fig. 4

- Restore power to unit by plugging into outlet and turning main power switch on. Turn compressor switch on and test for proper function. Compressor will stop when achieving set pressure. Verify 75-80 psi reading on regulator/master air gauge. Let stand for five minutes to ensure relief valve does not exhaust air.