



# ASI

The Leader In Advanced Systems Integration  
Advanced Dental Systems® & Advanced Endodontic Systems®  
www.asimedical.net | (303) 766-3646

## Technical Guideline

### Installing a Bottom Drain Sediment Bowl Upgrade Kit

TG-95-0339

Rev B | 08 Jan 2016 | Page 1 of 5

#### WARNINGS



**WARNING!** Only qualified personnel should service or repair this device. This device should only be serviced/ repaired by a qualified service technician who is proficient in the repair of electromechanical dental equipment and who understands the complexities and risks of working within the device and observes proper safety precautions.



**WARNING – Electrical Voltage.** This system is powered by high voltage electricity. Like any other electrically powered device, if it is not used properly, it can cause electrical shock. Always plug the power cord into an electrical outlet with adequate fuse protection and proper grounding. In the event of a short circuit, grounding reduces the risk of shock by providing an escape wire for the electric current. Improper grounding of the unit can result in a risk of electric shock. Always unplug the unit before doing any service or repair to the unit.



**WARNING – Infectious Materials.** Infectious disease workplace safety protocols to safeguard against cross contamination of infectious disease should always be observed. When maintaining the suction system or emptying the contents of the suction waste container, safe precautions and practices including the wearing of face mask, eye protection and gloves are to be followed.

#### PARTS INCLUDED

- Sediment Bowl, Bottom Drain Upgrade Kit:
  - Purge pump tubing, bottom drain
  - Sediment bowl, bottom drain
  - Swivel elbow, 1/4" x 3/8"
  - Plug stem
  - O-Ring grease

#### TOOLS REQUIRED

- Flat head screwdriver
- Flat wrench

#### INSTRUCTIONS

1. Drain suction canister; flush and drain completely.
2. Turn off power to unit.



# ASI

The Leader In Advanced Systems Integration  
Advanced Dental Systems® & Advanced Endodontic Systems®  
www.asimedical.net | (303) 766-3646

## Technical Guideline

### Installing a Bottom Drain Sediment Bowl Upgrade Kit

TG-95-0339

Rev B | 08 Jan 2016 | Page 2 of 5

- Open the back panel of unit using a flat head screwdriver. There are two quick-turn screws on the back of unit. Move suction tube and electrical cord out of the way of back door. (Fig. 1)



Fig. 1

- Locate peristaltic purge pump housing and open to access the tubing. (Fig. 2)

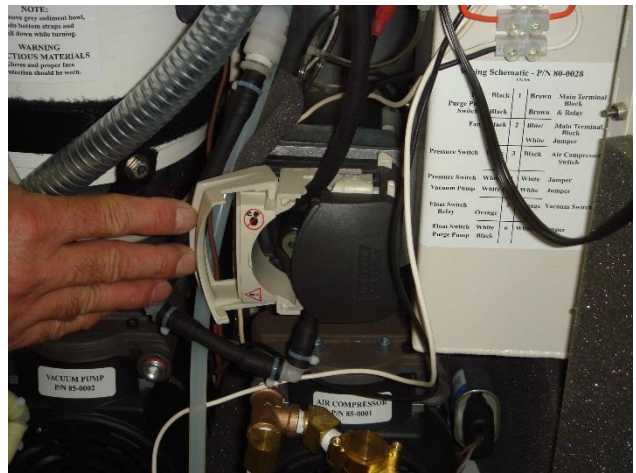


Fig. 2



# ASI

The Leader In Advanced Systems Integration  
Advanced Dental Systems® & Advanced Endodontic Systems®  
www.asimedical.net | (303) 766-3646

## Technical Guideline

### Installing a Bottom Drain Sediment Bowl Upgrade Kit

TG-95-0339

Rev B | 08 Jan 2016 | Page 3 of 5

5. Remove the existing black or beige purge pump tubing from the housing. (Fig. 3) (Fig. 4)

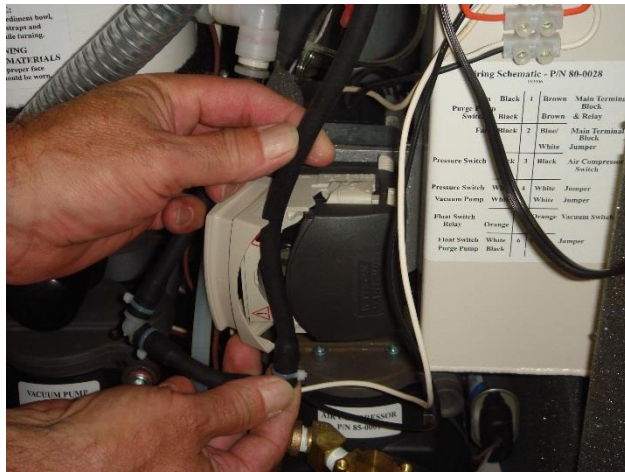


Fig. 3

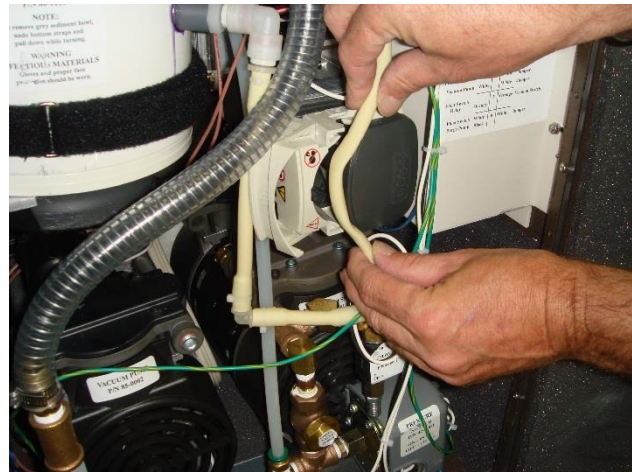


Fig. 4

6. Insert head of a flat head screwdriver between the white plastic adapter and the white plastic connector on the tubing. Depress white ring while pulling down on the tubing. (Fig. 5)



Fig. 5

7. Insert the plug into the adapter.



# ASI

The Leader In Advanced Systems Integration  
Advanced Dental Systems® & Advanced Endodontic Systems®  
www.asimedical.net | (303) 766-3646

## Technical Guideline

### Installing a Bottom Drain Sediment Bowl Upgrade Kit

TG-95-0339

Rev B | 08 Jan 2016 | Page 4 of 5

8. Follow the black or beige tubing to where it connects behind the port labeled, "Central Suction Quick Connect". The connector is the same as shown in Fig. 5. Disconnect the adapter and tubing the same as Step 6. (Fig. 6)

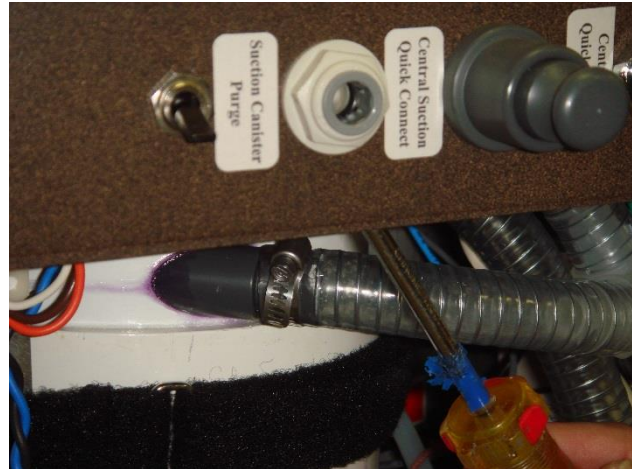


Fig. 6

9. Remove the existing sediment bowl from below the suction canister. The amalgam separator is located on the left above the vacuum pump. Loosen the Velcro straps under the separator (see Fig. 7). Grab the sediment bowl with both hands and remove by rotating while pulling down (see Fig. 8).

**NOTE:** Be careful to not spill sideways as the bottom of the bowl will have liquid in it. Once the bowl is removed, empty the contents into an appropriate hazardous waste receptacle to send to an authorized mercury disposal service provider.



Fig. 7



Fig. 8

10. Place the elbow into the bottom of the new replacement sediment bowl and firmly tighten.
11. Lubricate the O-ring and the side of the new sediment bowl with the silicone grease, then install in the suction canister. The elbow should be on the right side. Secure with the Velcro straps.





# ASI

The Leader In Advanced Systems Integration  
Advanced Dental Systems® & Advanced Endodontic Systems®  
www.asimedical.net | (303) 766-3646

## Technical Guideline

### Installing a Bottom Drain Sediment Bowl Upgrade Kit

**TG-95-0339**

Rev B | 08 Jan 2016 | Page 5 of 5

---

12. Install the new “L” shaped purge hose tubing assembly by inserting into the elbow in the sediment bowl. Carefully place into the roller pump and push in the top and bottom of the tubing while closing the latch.

**NOTE:** Do not pinch the tubing with the latch cover as it can puncture the tubing. Ensure it is placed fully in on the roller before closing the latch).

---

13. Insert the top of the purge hose tubing assembly into the output port on the top part of the chassis.

---

14. Plug unit in and turn power on.

---

15. To verify the installation, suction up a small amount of clean water into the suction handpieces. Then, run the purge pump while holding the endo drain tube in a drain or container and ensure it pumps out properly and for an absence of any leaks.

---