



ASI

The Leader In Advanced Systems Integration
Advanced Dental Systems® & Advanced Endodontic Systems®
www.asimedical.net | (303) 766-3646

Technical Guideline

Removing/Replacing Air Compressor

TG-95-0159

Rev A | 27 Oct 2015 | Page 1 of 4

CONTENTS

WARNINGS 1

PARTS INCLUDED 1

TOOLS REQUIRED 1

INSTRUCTIONS FOR STANDARD DESIGN 2

INSTRUCTIONS FOR SYSTEMS WITH GRAY SLIDE DESIGN 4

WARNINGS



WARNING! Only qualified personnel should service or repair this device. This device should only be serviced/repaired by a qualified service technician who is proficient in the repair of electromechanical dental equipment and who understands the complexities and risks of working within the device and observes proper safety precautions.



WARNING – Compressed Air. The compressed air system that operates this unit is under pressure. Compressed air can propel dust or loose particles and can cause bodily injury or damage. Always turn the system off and bleed off air pressure before attaching or removing air lines or accessories or servicing this unit. All air lines should be periodically inspected and replaced if worn or damaged. If an outside compressed air supply is used to power this unit, the air supply must be regulated to 80 psi or below. Excessive air pressure could cause certain components to rupture.



WARNING – Electrical Voltage. This system is powered by high voltage electricity. Like any other electrically powered device, if it is not used properly, it can cause electrical shock. Always plug the power cord into an electrical outlet with adequate fuse protection and proper grounding. In the event of a short circuit, grounding reduces the risk of shock by providing an escape wire for the electric current. Improper grounding of the unit can result in a risk of electric shock. Always unplug the unit before doing any service or repair to the unit.

PARTS INCLUDED

- Air compressor

TOOLS REQUIRED

- 7/16" Allen wrench
- Two 9/16" open-ended wrenches
- Small flat head screwdriver
- Hex head screwdriver



ASI

The Leader In Advanced Systems Integration
Advanced Dental Systems® & Advanced Endodontic Systems®
www.asimedical.net | (303) 766-3646

Technical Guideline

Removing/Replacing Air Compressor

TG-95-0159

Rev A | 27 Oct 2015 | Page 2 of 4

INSTRUCTIONS FOR STANDARD DESIGN

Instructions for installing in systems with a gray slide design, begin with Step 11 below.

1. Turn off main power and unplug unit from power outlet.
2. Run Air Syringe to relieve all compressed air in system.
3. Open door located on the back of the unit using a flat head screwdriver.

4. Locate nylon, white semi-opaque tubing connected to the compressor. Disconnect the tubing from the compressor by pressing down on the green ring with one thumb, push the tubing down into connector, and then lift tubing out of the connector. (Fig. 1)

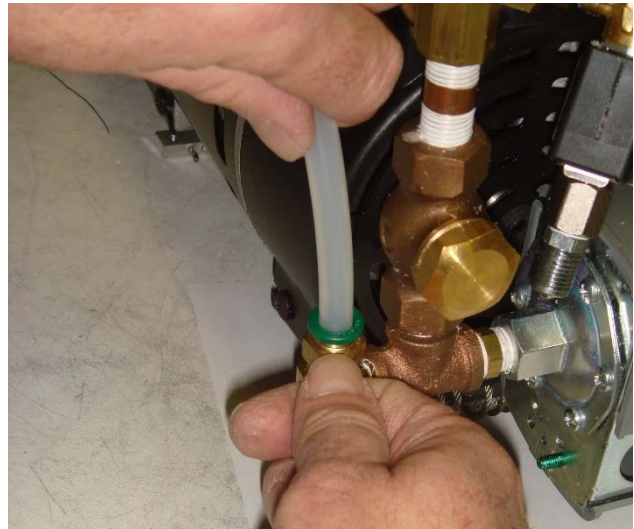


Fig. 1

5. Locate black and white wires coming from the compressor and follow them to the terminal block. Using a small flat head screwdriver, loosen screw in location "3" for removing black wire and location "4" for removing white wire. (Fig. 2)

NOTE: All wires that will be disconnected are on the left side of the terminal block.

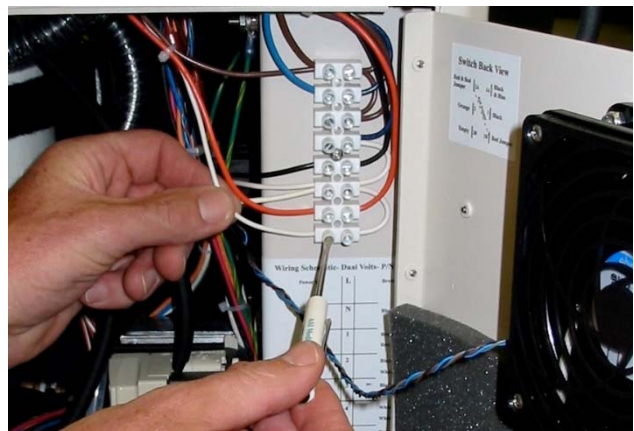


Fig. 2



ASI

The Leader In Advanced Systems Integration
Advanced Dental Systems® & Advanced Endodontic Systems®
www.asimedical.net | (303) 766-3646

Technical Guideline

Removing/Replacing Air Compressor

TG-95-0159

Rev A | 27 Oct 2015 | Page 3 of 4

6. Locate the three locking hex head bolts on the bottom of the metal plate holding the compressor. There are two in the front and one in the center on the left side. Remove them using a 7/16" wrench or socket and set aside. (Fig. 3)

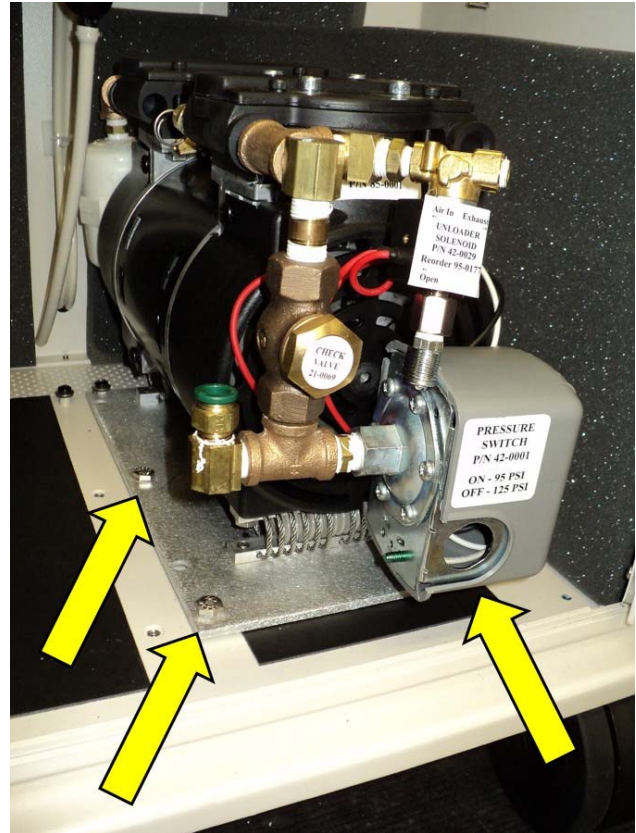


Fig. 3

7. Once the bolts have been removed, carefully lift and slide the compressor motor with plate out and remove the chassis.

NOTE: The compressor might need to be rocked back and forth to remove.

8. Reinstall the replacement compressor by sliding the compressor with plate in towards the chassis. The compressor might need to be rocked back and forth to get it into position.
9. Complete the installation by following Steps 3 through 6 in reverse order.
10. Restore power to the unit and test for correct installation by checking for leaks and proper function.



INSTRUCTIONS FOR SYSTEMS WITH GRAY SLIDE DESIGN

11. Follow Steps 1-5 above.

12. Locate the locking bolts attaching the compressor to the bottom of the unit. Remove screws using a 7/16" wrench or socket. (Fig. 4)



Fig. 4

13. Locate the six 10/32 socket screws on both sides of the compressor and remove using the hex head screwdriver. (Fig. 5)

NOTE: To more easily access the second and third screws, lean the compressor slightly..

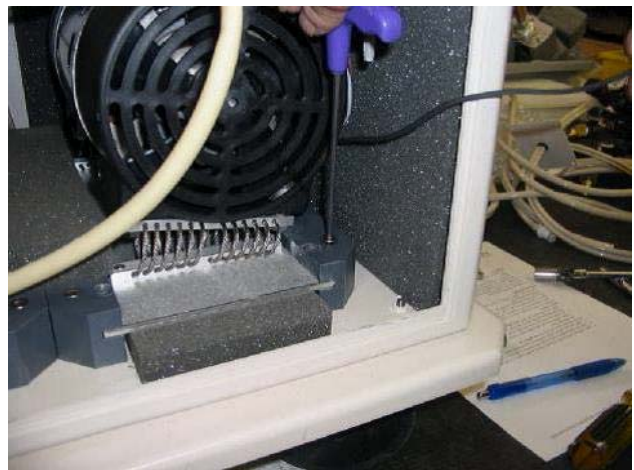


Fig. 5

14. Remove the compressor out of the unit with gray slides attached.

NOTE: The foam underneath the compressor may be damaged when removing the compressor. This foam aids in deafening sound, therefore replace the foam if there is significant damage.

15. Reinstall replacement compressor by sliding into place.

16. First, follow Steps 12 and 13 in reverse order. Then, follow Steps 3 through 5 in reverse order.

17. Restore power to the unit and test for correct installation by checking for leaks and proper function.