



The Leader In Advanced Systems Integration  
Advanced Dental Systems® & Advanced Endodontic Systems®  
www.asimedical.net | (303) 766-3646

## Technical Guideline

### Replacing the Handpiece Pressure Gauge

TG-95-0136

Rev B | 15 Apr 2015 | Page 1 of 3



**WARNING!** Only qualified personnel should service or repair this device. This device should only be serviced/repared by a qualified service technician who is proficient in the repair of electromechanical dental equipment and who understands the complexities and risks of working within the device and observes proper safety precautions.



**WARNING – Compressed Air.** The compressed air system that operates this unit is under pressure. Compressed air can propel dust or loose particles and can cause bodily injury or damage. Always turn the system off and bleed off air pressure before attaching or removing air lines or accessories or servicing this unit. All air lines should be periodically inspected and replaced if worn or damaged. If an outside compressed air supply is used to power this unit, the air supply must be regulated to 80 psi or below. Excessive air pressure could cause certain components to rupture.

#### PARTS INCLUDED

- Handpiece pressure gauge
- Tubing retainer

#### TOOLS REQUIRED

- 1/4" nut driver
- Side cutters or scissors

#### INSTRUCTIONS

1. Turn off main power and air supply to unit.
2. Run air/water syringe to relieve compressed air in system
3. Open the top of the delivery system according to delivery system type.
4. Locate handpiece pressure gauge on the front of the delivery system. (Fig. 1)



Fig. 1

5. Locate backside of handpiece pressure gauge. (Fig. 2)

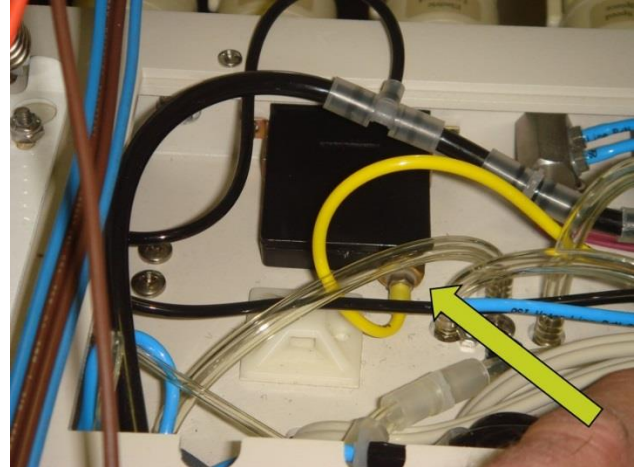


Fig. 2

6. There are nuts on both sides of the pressure gauge. Locate the nuts and remove them using a 1/4" nut driver. (Fig. 3)

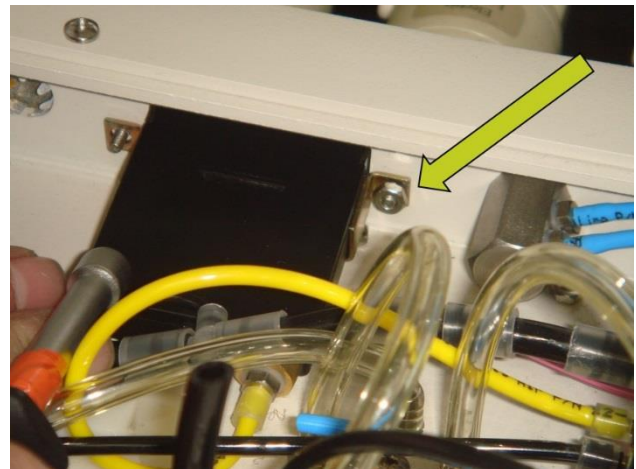


Fig. 3

7. Once you have removed the nuts, pull gauge out and clip yellow tubing. (Fig. 4)

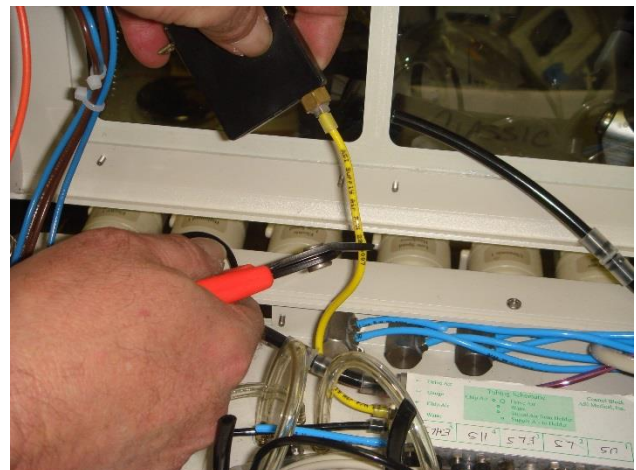


Fig. 4

- To attach the new pressure gauge, slide provided sleeve over cut yellow tubing, insert straight through connector, then slide the sleeve down to secure the connection. Repeat for the other side. (Fig. 5)

**NOTE:** Pulling back on tubing while sliding the sleeve over will help seat and secure the sleeve.

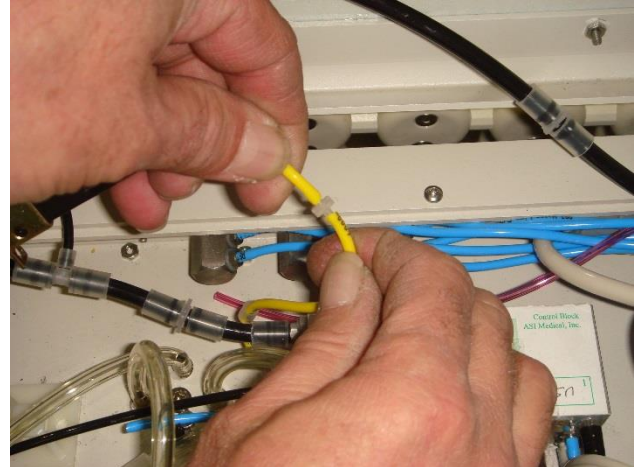


Fig. 5

- Place new gauge back into the mounting hole. Attach the nuts using a 1/4" nut driver. (Fig. 6)



Fig. 6

- Restore power to the unit, verify correct installation by testing for proper handpiece pressure functions.