



The Leader In Advanced Systems Integration

Advanced Dental Systems® & Advanced Endodontic Systems®
www.asimedical.net | (303) 766-3646

Technical Guideline

EndoMotion

TG-90-5298

Rev B | 16 Mar 2015 | Page 1 of 5

PARTS INCLUDED

- EndoMotion motor

TOOLS REQUIRED

- Phillips screwdriver
- 1/4" nut driver
- Needle nose pliers



WARNING! Only qualified personnel should service or repair this device. This device should only be serviced/repaired by a qualified service technician who is proficient in the repair of electro-mechanical dental equipment and who understands the complexities and risks of working within the device and observes proper safety precautions.

INSTRUCTIONS



WARNING – Electrical Voltage. This system is powered by high voltage electricity. Like any other electrically powered device, if it is not used properly, it can cause electrical shock. Always plug the power cord into an electrical outlet with adequate fuse protection and proper grounding. In the event of a short circuit, grounding reduces the risk of shock by providing an escape wire for the electric current. Improper grounding of the unit can result in a risk of electric shock. Always unplug the unit before doing any service or repair to the unit.

1. Unplug ASI cart from main power. Open the cover of the unit.

2. Remove old Endo Motion device from display window by removing the four (4) nuts holding the device panel into the display window (Fig. 1).

Unplug all of the cables (power, foot control, and motor harness).



Fig. 1

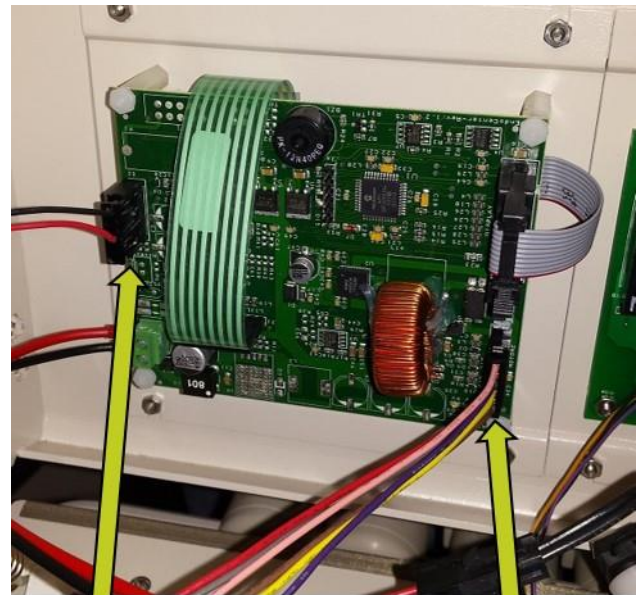
3. After removing the device from the display window, install the replacement device in the display window. After verifying the device is installed in the correct orientation (not upside down), secure it with four (4) nuts provided.

- Reconnect the connector with red and black wires to the foot control switch and the multi colored connector to the connector labeled, "MOTORE" on the board (Fig. 2).



Power Plug

Fig. 2a



Foot Control

Motor Cable

Fig. 2b

- Using two shoulder washers provided run the motor harness into the cart. Verify that the assembly is seated properly (Fig. 3).



Fig. 3a

Depicts plastic shoulder washer

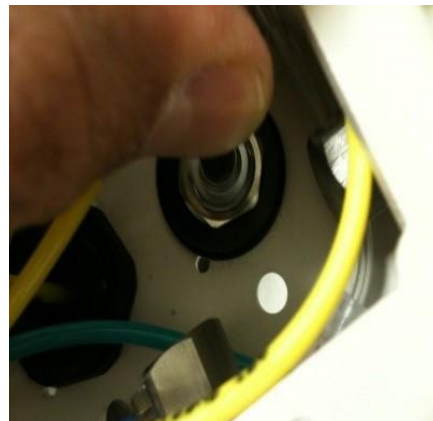


Fig. 3b

Demonstrates dropping in the motor harness through the opening

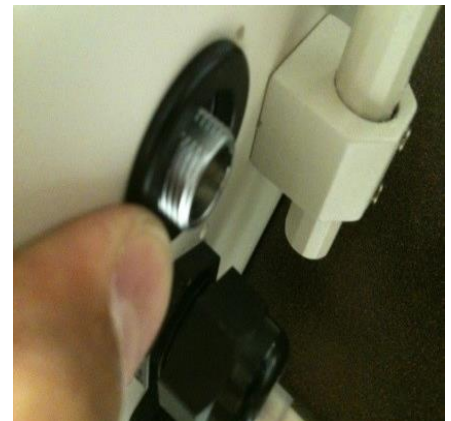


Fig. 3c

Second shoulder washer in place flush with the surface of the outside base plate



ASI

The Leader In Advanced Systems Integration

Advanced Dental Systems® & Advanced Endodontic Systems®
www.asimedical.net | (303) 766-3646

Technical Guideline

EndoMotion

TG-90-5298

Rev B | 16 Mar 2015 | Page 3 of 5



Fig. 3d

Shows the fastening the harness secured in place

6. Mount power adapter on base plate and connect the blue and brown wires to the transformer (Fig. 4).



Fig. 4



The Leader In Advanced Systems Integration

Advanced Dental Systems® & Advanced Endodontic Systems®
www.asimedical.net | (303) 766-3646

7. Plug in power as shown Fig. 2 (arrow) and plug the motor back into the connector on the outside of the cart (Fig. 5).

NOTE: All EndoMotion models use the same auto holder.

Proceed to testing in Step 8.



Fig. 5a



Fig. 5b

Examples of new EndoMotion and Motor Cord attached
Harness



The Leader In Advanced Systems Integration

Advanced Dental Systems® & Advanced Endodontic Systems®
www.asimedical.net | (303) 766-3646

Technical Guideline

EndoMotion

TG-90-5298

Rev B | 16 Mar 2015 | Page 5 of 5

8. Follow the steps below to ensure the newly installed EndoMotion is functioning properly:

- Turn the power on the ASI unit. Check that the console display lights up.
- Attach a contra angle handpiece onto the motor.
- Press the "Calibrate" button and observe the motor running until it completes this mode.
- Press the "Mode" button to select the "Rotating" Mode:
- Press the "+" and "-" (plus and minus / presets 1-10), noting that the Program Settings change up and down.
- Press the "Ratio" button and then press the "+" and "-" (plus and minus / presets 1-10), noting that ratio selections change up and down.
- Press the "RPM" button and then press the "+" and "-" (plus and minus / presets 1-10), noting that the speed indications change up and down.
- Press the "Ncm" button and press the "+" and "-" (plus and minus / presets 1-10), noting that the torque indications change up and down.
- Press the "Mode" button to select the "Reciprocating" Mode.
- Press the "+" and "-" (plus and minus / presets 1-10), noting that the torque indications change up and down.
- Press the "Ratio" button and then press the "+" and "-" (plus and minus / presets 1-10), noting that ratio selections change up and down.
- Press the "Forward Degrees" button and then press the "+" and "-" (plus and minus / presets 1-10), noting that the forward degree indications change up and down.
- Press the "Reverse Degrees" button and then press the "+" and "-" (plus and minus / presets 1-10), noting that the reverse degree indications change up and down.
- Press the "Mode" button to select "Rotating" Mode. Operate the unit by depressing the foot control, noting that the motor runs. Release the foot control, noting that the motor stops. Select the "Reverse" Mode and then press the foot control again, noting an audible beep occurs while the motor is running in reverse.
- Press the "Mode" button to select "Reciprocating" Mode. Operate the unit by depressing the foot control, noting that the motor runs. Release the foot control, noting that the motor stops.
- Place the motor back into the holder and ensure that it fits properly and that it does not operate when in the holder and while depressing the foot control.